

# **MiniDisc**

Desktop management software for RISC OS

User Guide

---

## Licence

- This program ('MiniDisc') is © Copyright 1998-2002, Jamie Michael Temple. All rights reserved.
- This program is released as 'Freeware'.
- This program may be freely distributed, under the following conditions:
  - Absolutely no charges may be made by anyone for it.
  - No modifications are made to it, or any of it's accompanying files, all of which must be included in their original state.
  - Inclusion in any compilations / cover discs / CD's, or on any web / ftp site may be made only with the authors express prior permission.
- You use this software entirely at your own risk, whilst I sit on my laurels, claiming no responsibility for any damage or loss of data, (or anything else for that matter) that may occur as a result (be it direct or indirect) of using this software.
- I make no guarantee that this program is fit for any purpose whatsoever.

## Thanks

- Every single person that has clicked on the 'Registration' button on the website or who has sent me an email with suggestions, bug reports and general encouragement. Also, thanks to all who have performed compatibility testing on filing systems and hardware out of my reach.
- A special thanks to Arthur Taylor for help in resolving problems with the ADPL interface.
- Jon Ripley for sending me some rectangular pixel sprites.
- Chris Morrison for permission to use the neat little 'web' pointer sprite.
- Gert Jan de Vos for allowing me to distribute his 'PinDir' program with MiniDisc.
- CJE Micros for encouragement and assistance, enabling me to add networking support.
- Jason Tribbeck for helpfully supplying API information for RMFS.
- Paul at IMS, for loads of support during PsiRiscFS implementation.
- Nick Craig-Wood for Director, without which early versions of MiniDisc would never have come about.
- comp.sys.acorn.programmer contributors for assistance in solving a few or the real nasty problems RISC OS has thrown at me.

## MiniDisc has been developed with the help of the following tools:

- |                                     |   |
|-------------------------------------|---|
| <input type="checkbox"/> Desk_Lib   | Jason Williams and Julian Smith                             |
| <input type="checkbox"/> OSLib      | Johnathan Coxhead, Tony van der Hoff and OSLib contributors |
| <input type="checkbox"/> Zap        | Dominic Symes and the 'Zap Developers'                      |
| <input type="checkbox"/> WinEd      | Tony Houghton   |
| <input type="checkbox"/> DBAssist2  | Richard Sargeant  |
| <input type="checkbox"/> StrongHelp | Guttorm Vik and the numerous manual authors                 |
| <input type="checkbox"/> WimpFlags  | Chris Morrison  |
| <input type="checkbox"/> Pollster   | Keith Gaughan   |
| <input type="checkbox"/> ResFind    | Guttorm Vik   |
| <input type="checkbox"/> WindowRd   | Jason Tribbeck  |
| <input type="checkbox"/> WimpMon    | Tom Hughes  |

# Contents

Introduction	1
Getting started	2
The MiniDisc icon	4
Discs	8
CD ROM drives	11
ROM apps	14
Memphis	15
EPOC devices	16
Networking	18
ArmTCP	21
Shortcuts	23
Desktop patches	28
Toolbar	29
'Smart' saver	32
Other configuration options	34
* Commands	38
Reporting problems	40



## History

MiniDisc was originally designed to clean up the left hand side of your iconbar by removing all of the disc icons, and replacing them with a single icon 'stack'. This it has achieved. However, I seem to have got a little carried away, and now MiniDisc offers a wealth of additional features for managing the day-to-day use of your RISC OS desktop.

## This Manual

This manual is designed to provide comprehensive details on all features of MiniDisc.

At first glance it may seem that you'll have to spend a month reading before being able to use MiniDisc - this is not the case. Granted, there are a vast number of configuration options available to you - this is necessary because virtually every RISC OS user I have ever come across seems to want MiniDisc to operate differently. I have attempted to build a set of 'sensible' default configuration options that will allow most users to run MiniDisc 'out-of-the-box' without problems.

I would suggest that you take a moment or two to read the 'Getting started' section which has been designed as a quick introduction to using MiniDisc.

## Contacting the author

I can be contacted via email at:

[support@minidisc.iconbar.com](mailto:support@minidisc.iconbar.com)

Please note: If you need to report a problem with MiniDisc, see the section on 'Reporting problems' for further information on how to submit a full bug report.

## Welcome to MiniDisc!

This section should help you to ensure that you have everything that you need to install MiniDisc on your RISC OS computer, along with a brief introduction to the ways in which MiniDisc is able to make using RISC OS an easier, more enjoyable experience!

## System requirements

### RISC OS 3.10 or newer

#### New '!Boot' sequence

MiniDisc requires a modern '!Boot' sequence. Most modern RISC OS machines will come with a hard-disc pre-installed with a suitable '!Boot' sequence. For older machines, the 'Universal' boot sequence is required, this can be found on the Acorn User 200<sup>th</sup> edition CD-ROM, or downloaded from:

<http://acorn.riscos.com/riscos/releases/UniBoot/uniboot.zip>

#### Acorn URI / ANT URL support

MiniDisc uses the Acorn URI protocol for sending messages to internet programs (for example, to tell your web browser to display a web-page). Many internet programs support this protocol, but the ANT internet suite of programs use a different URL protocol. For MiniDisc to interact properly with these programs you will also need to download Iain Truskett's URICnv program from:

<http://koschei.midnightrealm.org/code/riscos/>

## Installation

Copy the '!MiniDisc' application directory out of the archive to an appropriate location on your hard-disc.

☆ MiniDisc will happily run from the 'Tasks' section of your 'Boot' sequence.

### RISC OS 4.2x and newer

For subscribers to the RISC OS 4 'Select' scheme, MiniDisc is distributed with a compliant configuration tool 'plug-in'. This will allow MiniDisc to be configured via Configure in addition to the normal methods.

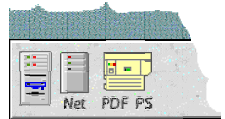
To install the MiniDisc configuration tool, open the Select subdirectory within the MiniDisc distribution archive, run Configure, then drag the application !MDSsetup to the main Configure window.

## Running MiniDisc

If you have not installed MiniDisc to run as a part of your 'Boot' sequence, then this is as simple as opening a filer window for the directory that you installed MiniDisc into, and then double-clicking on the !MiniDisc icon.

The first time you run MiniDisc, it will create a number of default configuration files. Later sections of this guide describe how to tailor the way MiniDisc works to your choosing.

Once run, an icon representing a 'stack' of discs will appear on the far left of your icon bar.



## Key features

MiniDisc has grown considerably since its early beginnings as a Director add-on. Key features of the current version are:

### The MiniDisc icon

The MiniDisc iconbar icon can act as a desktop information tool, showing the current time, date, or the amount of free memory available.

You can also customise up to eight different actions to be performed when clicking with Select or Adjust, and another eight for dragging files to the icon.

### Filing systems integration

This was the original idea behind the development of MiniDisc. MiniDisc will remove all of the drive icons from the left of the iconbar, and add them to an easily accessible menu, available by clicking Menu on the MiniDisc iconbar icon.

### Shortcuts

As a further enhancement of the filing system integration work, it has been possible to incorporate a sophisticated application launcher into MiniDisc.

## Desktop patches

As MiniDisc has evolved, and at users requests, it has been possible to add a number of desktop filters to enhance the way that MiniDisc and other applications interact with RISC OS.

## Toolbar

A recent enhancement (again, due to users requests) is the Toolbar facility. Easily configurable, will pop-up when needed, and disappear again quietly afterwards.

## Hierarchical directory menus

Hierarchical directory menus are a useful directory navigation tool. MiniDisc is able to generate a hierarchical menu of a directory's contents, allowing you to navigate the directory structure. Directory menus can be generated via a \* command, as a result of MiniDisc intercepting some specific WIMP event, by clicking on the MiniDisc iconbar icon, or as an entry in a Shortcuts menu.

## Personalising MiniDisc

The following sections will describe in detail all of the features of MiniDisc, and how to customise them to meet your needs. However, if you don't want to spend time reading the the rest of this guide, then I would suggest that you run the interactive Help application, and move the pointer over each of the fields in the Choices window, all of which will display extensive details of how they work.

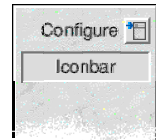
### The main MiniDisc choices window

The majority of MiniDisc features can be controlled via the main configuration window. To open it, click on the 'Choices...' option in the main menu.

### Navigating the choices window panes

The top right hand side of the choices window is the configuration picker. These icons display the current MiniDisc functions being configured. Clicking on the menu icon will display a list of all other available sections that you may configure.

**NOTE:** There are currently certain MiniDisc features still under development, to enable me to better design the user interface to accommodate these future features they are also shown in this menu, however they have been greyed out on the menu to disable their selection.



At this time, those options unimplemented are:

- Printers
- Memoriser
- Trash can

### Finding out more about configuring MiniDisc

This guide has been designed to cover the vast majority of ways in which you can configure MiniDisc. Further technical information, including configuration file formats, and some of the more obscure ways in which MiniDisc may be customised should be available on-line via the main MiniDisc website at:

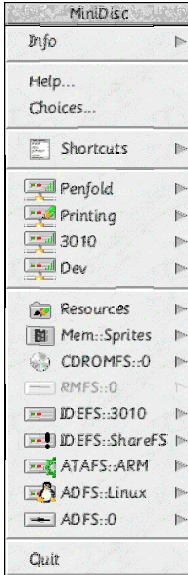
<http://minidisc.iconbar.com>

## Introduction

The MiniDisc iconbar icon is packed with features to enable you to make using the RISC OS desktop a more pleasurable and productive experience.

## The iconbar menu

Clicking the middle ('Menu') mouse button over the MiniDisc icon will display the main MiniDisc iconbar menu:



There are only four standard items in the main MiniDisc menu, the rest of which will depend upon how you have configured MiniDisc (see later chapters for how to alter which devices / filing systems will appear in the menu).

### Info

Following the submenu from here will display a normal 'About this program' window.

Clicking in the 'Name' field will open the MiniDisc home page on the world-wide web.

Clicking in the 'Author' field will tell your email software to create a new email for reporting bugs / sending me suggestions on how to improve MiniDisc.

Clicking in the 'Version' field will display various additional program build information which may be useful if you need to report a problem with MiniDisc.

### Help...

Clicking on 'Help...' will open the MiniDisc user guide.

### Choices...

'Choices...' will launch the MiniDisc configuration window.

### Quit

... will exit MiniDisc.

## Iconbar information tool

The icon which MiniDisc places on the left of your iconbar can be configured to act as a desktop information tool, displaying a variety of useful pieces of information underneath the icon:

- The current time
- The current date
- Your computers available memory
- Any other text you wish

## Iconbar clicks

It is possible to configure up to sixteen different actions that MiniDisc can perform when the user clicks on the MiniDisc icon with either the left ('Select') or right ('Adjust') mouse buttons, along with the Shift, Control and Alt keyboard modifiers.

The current actions that are possible are:

- Execute a \* command
- Open a file or directory window
- Launch a URL to visit a website, run an ftp session etc...
- Create a Director-style hierarchical directory menu
- Change the information shown below the MiniDisc icon
- Display a Shortcuts menu

## Iconbar drags

You can configure up to eight different actions that MiniDisc will perform when files are dragged to the MiniDisc icon.



The list of actions that MiniDisc is able to perform when files are dragged are:

- Copy / save the file to a directory
- 'Smart' saving
- Delete files
- Set the current working directory
- Execute commands
- Add items to a shortcuts menu

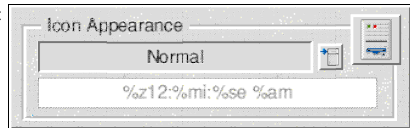
☆ For more information on the 'Smart' saving facility, see the section later in this guide.

## Configuring the MiniDisc icon

To customise the appearance and functionality of the MiniDisc icon, select 'Iconbar' from the configuration picker in the choices window.

### Iconbar appearance

The top of the iconbar choices window holds options that allow you to alter the MiniDisc iconbar icon appearance. Clicking on the menu selector button on the right will allow you to choose the appearance of the MiniDisc icon. The currently selected appearance will be shown in the field to the left. The writable field allows the 'user defined text' option to be set.

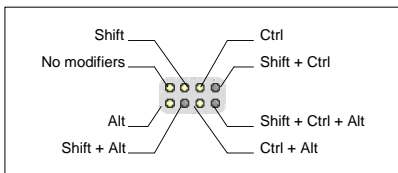
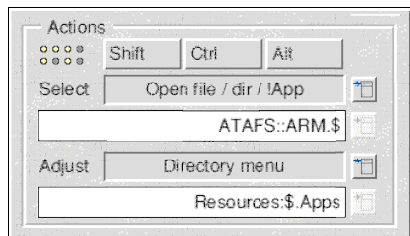


Available options are:

- Normal** - the default MiniDisc icon
- Icon + time** - displays the current time in 24-hour 'hh:mm' format below the MiniDisc icon
- Icon + date** - displays the current date in 'dd/mm/yy' format below the MiniDisc icon
- Icon + free memory** - will display the free memory available in your computer. This will be displayed as Megabytes unless you have less than 8 Megabytes of free memory, in which case it will be shown as Kilobytes.
- Icon + user text** - allows you to display the text of your choice below the MiniDisc icon. The text is specified by entering it into the writable icon. If any of the text begins with a '%' character it will be passed to the operating system to translate, otherwise the text will be displayed 'as-is'.

### Iconbar actions

MiniDisc is able to perform up to sixteen different actions for you with different combinations of mouse clicks (either Select or Adjust) along with special keyboard 'modifiers' (Shift, Ctrl and Alt). The eight small indicators in the top left of the frame show which combinations of modifiers are currently in use, with yellow meaning that either mouse button has a command set with a specific modifier:



In effect, these indicators are numbered from left to right 0 to 3 on the top row, and 4 to 7 on the bottom, where Shift has a value of 1, Ctrl 2, and Alt 4.

The sets of icons below the modifiers allow you to configure the actions performed with Select and Adjust clicks. The first field shows the current action assigned to that mouse button / keyboard modifier combination. The menu icon to the right allows you to change this action. The meaning of the field below is dependent upon the action selected.

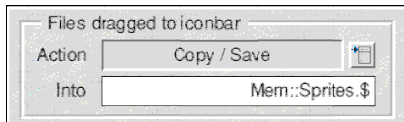
Available actions are:

- Execute command** - Enter any command into the writable icon and MiniDisc will execute it for you when you use the specified mouse click / keyboard modifier on the MiniDisc icon.
- Open file / dir / !App** - Enter the full pathname of a file, directory or application into the writable icon.
  - A file will be 'Filer\_Run', just as if it had been double clicked on in a filer window.
  - A directory will be 'Filer\_OpenDir'ed to open a filer window.
  - An application will be 'Filer\_Run' to launch the program.
- Launch a URL** - Enter a fully qualified Uniform Resource Locator (URL) into the writable icon and MiniDisc will attempt to take you there. There are two important points to note here:
  - 1 This feature uses Acorns URI module to send the appropriate messages. If you do not have this module installed then this facility WILL NOT WORK. (See the 'Getting Started' section for an explanation of how to download and install URI facilities.)
  - 2 This facility will only work if a URI aware application has been 'seen' by the filer and therefore had the opportunity to register itself. This will only be a problem if your web browser / mail or ftp client programs have not been filer-booted. To avoid this, either ensure that these programs have been seen by filer-booting them (easily accomplished using the RISC OS 4 'Look at' part of the Boot configuration program) or you could have MiniDisc Filer\_Boot them for you by including appropriate lines in a startup script.
- Directory menu** - Enter the full pathname of a directory into the writable icon and MiniDisc will create a 'Directory Menu' similar to those used by Director that will allow you to navigate your harddiscs from a menu without having to open lots of filer windows.
- Cycle icon type** - Choosing this option will make MiniDisc rotate through the available icon types. (See the previous section for what these are.) This will allow you to quickly change the icon to show you the time or free memory etc. then restore the icon to it's original state without having to re-configure MiniDisc
- Shortcuts menu** - Use the menu button on the right to select a Shortcuts menu that could be displayed when you click on the MiniDisc icon.
- None** - This option is used to remove an action previously associated with the selected button click + modifier.

☆ If you use Nick Craig-Woods' *Director* program and use the facility above to attach a command to the Adjust key to perform a '**Filer\_OpenDir**' on a directory, Director will intercept this and create a directory menu of it's own. To avoid this, use the '**Open file / dir / !App**' option instead.

### Files dragged to the iconbar

MiniDisc can be configured to perform up to eight actions on files dragged to its iconbar icon (that is, normal drags, or files dragged with any combination of the aforementioned keyboard modifiers). This could be any regular file, or an as-yet unsaved file from an applications 'Save-As' dialog box.



Available options are:

- Copy / Save** - will save the file dragged to the MiniDisc icon into the directory specified in the writable icon.
- 'SmartSave'** - Will save the file into a type-specific directory. (see the 'Smart' saver section for further details of how to configure 'Smart' saving facilities.)
- Delete** - will delete the file dragged to the MiniDisc icon using a 'Filer Action' task. Use the menu selector icon at the bottom of the window to choose the delete operation options - using these you could (for example) have a drag action that will force a file to be deleted, (or alternatively) have the Filer prompt you for confirmation before deleting the file.
- Set CSD** - will set the current directory to that dragged to the MiniDisc icon. If a file is dragged with this option selected, then the current directory will be set to that in which the dragged file is held.
- Execute command** - will execute the command in the writable field when a file is dragged to the iconbar icon. MiniDisc will perform a file name substitution if the characters '%0' are found in the specified command, so (for example) the command 'Echo %0' in the writable field would result in the name of the file dragged to the icon being displayed on screen.

- Create Shortcut in** - offers a quick and easy way of adding entries to a Shortcuts menu. Select the shortcuts menu that you would like to create new Shortcuts in. Dragging files, directories or URL files to the iconbar will now add a Shortcut entry into the specified Shortcuts menu.
- None** - This option can be used to remove a drag-to action previously assigned.

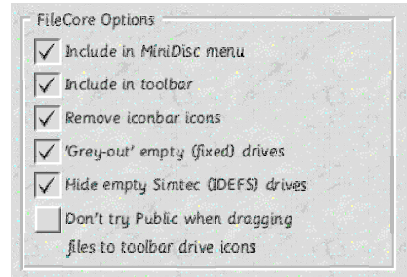
**Introduction to discs**

A key MiniDisc feature is the way in which it is able to integrate all of your hard discs and other storage devices. This is possible because RISC OS uses a clever 'layer' between your storage devices and the desktop called 'FileCore'.

MiniDisc will attempt to treat all 'standard' FileCore filing systems in a common way, this includes a variety of different IDE and SCSI filing systems, along with a few other more exotic variants.

**Configuring discs support**

To customise how MiniDisc will interact with your storage devices, select 'Discs' from the configuration picker in the choices window.



- Include in MiniDisc menu** - Tick this option to add an entry into the main MiniDisc menu for each FileCore based device found.
- Include in toolbar** - With this option enabled, MiniDisc will add a toolbar button for each FileCore based device found.
- Remove iconbar icons** - Ticking this option will remove all filer icons (where not overridden by a specific filing system configuration option) from the iconbar when MiniDisc starts, then ensure that they are put back when quit.
- 'Grey out' empty (fixed) drives** - With this option ticked, MiniDisc will display an empty greyed-out icon in the main MiniDisc menu for drives where a disc label cannot be found. (This excludes ADFS::0)
- Hide empty Simtec (IDEFS) drives** - Due to the way that Simtec IDEFS adds and removes disc icons, it will always report your machine as having 8 devices attached. This can make the main MiniDisc menu look rather messy. To avoid this, tick this option, MiniDisc will then check the disc label of each IDEFS drive, and hide any drives that report an error.
- Don't try Public when dragging files to toolbar drive icons** - MiniDisc is able to save files dragged to a toolbar drive icon into a specified directory. When looking for where to save the file, MiniDisc will look in the following directories:

- 1 <Drive>\$.<xxxxFiler\$DefaultDir>
- 2 <Drive>\$.Public
- 3 <Drive>\$.

This option will skip the second of these locations that MiniDisc will try to save the file. More information on toolbars and discs can be found later in this section.

**Discs in the main MiniDisc menu**

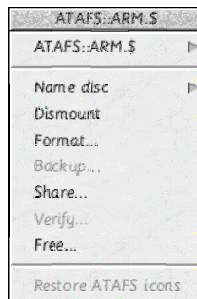
MiniDisc can add a separate entry into the main menu for each storage device attached to your machine. Clicking on these menu entries will open a Filer window for the root directory of that drive.

## Control sub-menu options

Following the submenu arrow from a drive in the main MiniDisc menu will display a drive control menu similar to the one shown here.

☆ See the 'Other configuration options' section for information on how to suppress drive control submenus.

The following is a list of all possible menu entries, some of which are only available for certain filing systems.



### Path menus

The first entry in a drive control menu is a directory navigation tool. Clicking on this item will open a filer window for the path shown. Following the submenu arrow will generate a hierarchical directory menu of the root ('\$') directory for that drive, allowing you to navigate the directory structure.

### Name Disc

Follow the submenu arrow to a writable submenu in which you can type to rename the disc.

### Eject

Click on this menu entry to eject a disc from the specified RMFS drive. Follow the submenu offers an additional entry that will eject and dismount the drive.

☆ Only available on RMFS drives.

### Mount

*Not implemented in this version of MiniDisc.*

☆ Only available on Simtec IDEFS drives.

### Dismount

Clicking on this menu entry will dismount the specified disc.

### Format...

Due to the variety of ways in which different disc interfaces work, MiniDisc is unable to offer a format option. However, it is possible to enable formatting from this menu entry by adding a 'Filer Application'. See the section 'Other configuration options' for details on adding 'Filer Applications'.

### Backup

*Not implemented in this version of MiniDisc.*

### Share...

This option will be disabled unless you are running Acorn's Access networking software.

Clicking on this menu entry will open a window that will enable you to share or un-share the specified disc. See the 'Networking' section for more information.

### Protection

*Not implemented in this version of MiniDisc.*

☆ Only available on RMFS drives.

### Unlock

*Not implemented in this version of MiniDisc.*

☆ Only available on Simtec IDEFS drives.

### Lock

*Not implemented in this version of MiniDisc.*

☆ Only available on Simtec IDEFS drives.

### Verify...

Due to the variety of ways in which different disc interfaces work, MiniDisc is unable to offer a verify option. However, it is possible to enable verify from this menu entry by adding a 'Filer Application'. See the section 'Other configuration options' for details on adding 'Filer Applications'.

### Free...

Clicking on this menu entry will display the standard RISC OS drive free space window.

☆ This will work with whatever free space utility you have loaded. e.g. druck's FreeMap utility.

### Remove / Restore icons

*Not implemented in this version of MiniDisc.*

The last menu entry will offer either a remove or restore filer icons option, depending upon whether or not the specified filing system has placed drive icons on the iconbar. Clicking on this menu entry will remove or restore the disc drive icons to or from the iconbar.

☆ This option has been disabled in the current version of MiniDisc as it would seem to be unstable with certain filing systems.

## Toolbar interaction

The MiniDisc toolbar offers an additional means of accessing your discs. MiniDisc is able to add a button to the toolbar for each storage device attached to your machine.

Each disc button added to the toolbar is able to perform a different action depending on which mouse button is clicked, or when a file or directory is dragged to it:

### Select mouse clicks

Clicking with 'Select' on a drive button will open a Filer window for the root directory of that drive.

### Adjust mouse clicks

Click with 'Adjust' on a drive button to create a directory path menu for the root directory of that drive.

### Drag and drop

Files and directories can be dragged to toolbar drive buttons, and MiniDisc will save the files to that drive for you.

Holding down the 'Shift' key whilst dragging a file will cause it to be moved rather than copied to it's new location.

See the description of the '**Don't try Public when dragging files to toolbar drive icons**' configuration option (above) for information on how MiniDisc chooses where to save your files.

☆ A full description of the MiniDisc toolbar can be found in the 'Toolbar' section, later in this guide.

## Introduction to CD ROM drives

RISC OS allows CD ROM drives to be attached to your computer in a number of different ways, through the internal IDE interface, attached to alternative IDE or SCSI interfaces, or even to the parallel port. However, no matter how your CD ROM drive is attached to your computer, RISC OS uses a standard desktop user interface to access them by. This makes the job of integrating them quite simple for MiniDisc.

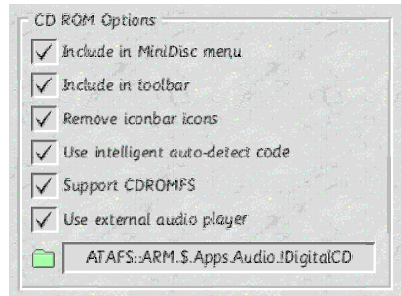
## CDROMFS support

Although the built-in CD ROM support offered by RISC OS is quite competent, Warm Silence Software have created an alternative, enhanced version called '**CDROMFS**'. If you use CDROMFS on your computer, then MiniDisc is able to use it instead of CDFS, offering you all of the improvements it offers, whilst integrating into MiniDisc just as easily as CDFS.

☆ See below for how to enable MiniDisc support for CDROMFS.

## Configuring CD ROM drive support

To customise how MiniDisc will interact with any CD ROM drives attached to your machine, select 'CD ROM' from the configuration picker in the choices window.



- Include in MiniDisc menu** - Ticking this option will make MiniDisc include any CD ROM drives attached to your machine appear in the main MiniDisc menu.
- Include in toolbar** - With this option enabled, a button will be added to the MiniDisc toolbar for each CD ROM drive attached to your machine.
- Remove iconbar icons** - Ticking this option will remove all CD icons from the iconbar when MiniDisc is run, and then restore them again when MiniDisc quits.
- Use intelligent auto-detect code** - With this option ticked, MiniDisc will interrogate the CD in the drive, and only put an 'Eject' or 'Close' option on a CD ROM drive 'control' sub-menu, based upon the information returned from the drive. Without this option selected, both 'Eject' and 'Close' will always appear in the menu. This option can be useful, because some CD ROM drives do not correctly report a drives status.
- Support CDROMFS** - With this option enabled, MiniDisc will try to use CDROMFS in preference to CDFS.
  - ☆ You will need to ensure that CDROMFS is running for this option to work. If 'Remove iconbar icons' has also been selected, then MiniDisc will also remove any CDROMFS icons from the iconbar.
- Use external audio player** - If you place an audio CD in your CD ROM drive, then (by default) clicking upon it in a MiniDisc menu will tell CDFS to start playing audio. With this option ticked, MiniDisc will launch an external CD player application for you. Simply drag a CD player application from it's filer window to the display field to set which program MiniDisc will use.

## CD ROM drives in the main MiniDisc menu

MiniDisc can add a separate entry into the main menu for each CD ROM drive attached to your machine. Clicking on these menu entries will perform a different action, depending upon the status of the drive, and the contents of the disc:

### Empty drive

MiniDisc will report that there is no disc available.

### Audio disc

If you have specified an external audio player in the CD ROM configuration window, then clicking on a CD ROM menu entry with an audio CD in the drive will launch the specified CD player program. Without a specified external audio player, clicking on the menu entry will start playing the CD at track 1.

### Data disc

If you click on a CD ROM entry in the main MiniDisc menu with a data disc in the drive, MiniDisc will open a filer window for the root ('\$') directory of the CD for you.

### Mixed mode

A 'mixed-mode' disc is a CD ROM that contains both an audio and a data component.

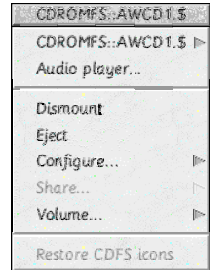
If you click on a CD ROM entry in the main MiniDisc menu with a mixed mode disc in the drive, then MiniDisc will perform **both** of the actions described above for audio and data discs. i.e. Open a filer window on the root directory of the data component of the disc, and start playing audio (or load your configured CD player program).

## Control submenu options

Following the submenu arrow from a CD ROM disc in the main MiniDisc menu will display a drive control menu similar to the one shown here.

☆ See the 'Other configuration options' section for information on how to suppress CD ROM disc control submenus.

The following is a list of all possible menu entries, some of which may be disabled or not displayed, depending upon the type of disc in the drive.



### Path menus

The first entry in a CD ROM disc control menu is a directory navigation tool. Clicking on this item will open a filer window for the path shown. Following the submenu arrow will generate a hierarchical directory menu of the root ('\$') directory for that CD ROM disc, allowing you to navigate it's directory structure.

### Audio player...

Click on this menu entry to launch your configured audio player, or to start playing audio data straight from the CD, depending upon how you have configured CD ROM support.

### Dismount

Clicking on this menu entry will dismount the CD ROM disc in the specified drive.

☆ With the 'Use intelligent auto-detect code' option enabled, this option will only be displayed if a disc has been detected in the drive.

### Close

Clicking on this menu entry will cause MiniDisc to try to close the CD ROM drive drawer / tray.

☆ With the 'Use intelligent auto-detect code' option enabled, this option will only be displayed if no disc has been detected in the drive.

### Eject

Click on this menu entry to eject the CD ROM from the specified drive.

☆ With the 'Use intelligent auto-detect code' option enabled, this option will only be displayed if a disc has been detected in the drive.

### Configure...

This menu entry will lead to a submenu window from where you can configure the number of attached CD ROM drives, and the amount of memory to allocate for CDFS buffers.

### Share...

This option will be disabled unless you are running Acorn's Access networking software.

Clicking on this menu entry will open a window that will enable you to share or un-share the specified CD ROM disc. See the 'Networking' section for further information.

### Volume...

This menu entry will lead to a submenu where you can alter the volume level of the audio played on the specified CD ROM drive.

☆ Volume control is not supported by all CD ROM drives.

### Restore / Remove CDFS icons

*Not implemented in this version of MiniDisc.*

The last menu entry will offer either a remove or restore icons option, depending upon whether or not CDFS (or



CDROMFS) has drive icons on the iconbar. Clicking on this menu entry will remove or restore the CD ROM drive icons to or from the iconbar.

☆ This option has been disabled in the current version of MiniDisc as it would seem to be unstable with certain filing systems.

## Toolbar interaction

The MiniDisc toolbar offers an additional means of accessing your CD ROM discs. MiniDisc is able to add a button to the toolbar for each drive attached to your machine.

Each CD drive button added to the toolbar is able to perform a different action depending on which mouse button is clicked:

### Select mouse clicks

Clicking with 'Select' on a CD drive button will open a Filer window for the root directory of the selected CD ROM drive.

### Adjust mouse clicks

Click with 'Adjust' on a CD drive button to create a directory path menu for the root directory of the specified CD ROM drive.

☆ A full description of the MiniDisc toolbar can be found in the 'Toolbar' section, later in this guide.

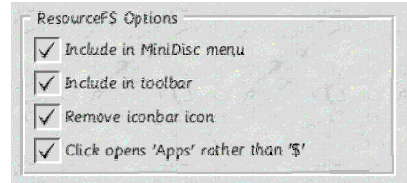
## Introduction to the ROM filing system

As is well known, RISC OS is a ROM based operating system. A part of this ROM contains the Resources Filing System (ResourceFS), used to store files and programs. RISC OS adds an '**Apps**' icon to the left of the iconbar to give access to those programs.

MiniDisc is able to remove the 'Apps' icon, and (once again) incorporate the functionality of it within the main MiniDisc menu and toolbar.

## Configuring ResourceFS support

To customise how MiniDisc will interact with the built-in Resources filing system, select 'Image fsn's' from the configuration picker in the choices window.



## ResourceFS in the main MiniDisc menu

MiniDisc is able to add an entry into the main menu for ResourceFS. Clicking on this entry will open a Filer window of either `Resources:$` or `Resources:$ .Apps` depending upon the configuration options described above.

## Toolbar interaction

The MiniDisc toolbar offers an additional means of accessing ResourceFS.

The ResourceFS button added to the toolbar is able to perform a different action depending on which mouse button is clicked:

### Select mouse clicks

Clicking with 'Select' on the ResourceFS toolbar button will open a Filer window of either `Resources:$` or `Resources:$ .Apps` depending upon the configuration options described above.

### Adjust mouse clicks

Click with 'Adjust' on the ResourceFS toolbar button will create a directory path menu for `Resources:$`.

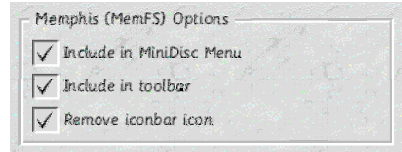
☆ A full description of the MiniDisc toolbar can be found in the 'Toolbar' section, later in this guide.

## Memphis - the sprite area RAM filing system

Memphis (MemFS) is a third-party alternative to the built-in RAM filing system. Unlike the RAM filing system however, Memphis uses the WIMP sprite area to store files, and is able to dynamically grow or shrink to accommodate files. MiniDisc is able to remove the MemFS icon, and incorporate it's functionality into the main MiniDisc menu and toolbar.

## Configuring Memphis support

To customise how MiniDisc will interact with Memphis, select 'Image fsn's' from the configuration picker in the choices window.



- Include in MiniDisc menu** - Ticking this option will make MiniDisc put an icon in the main MiniDisc menu for the Memphis RAM disc.
- Include in toolbar** - With this option enabled, MiniDisc will include a button in the toolbar for the Memphis RAM disc.
- Remove iconbar icon** - Tick this option to remove the Memphis icon from the iconbar when MiniDisc is run, then put it back again when quit.

## Memphis in the main MiniDisc menu

MiniDisc is able to add an entry into it's main menu for the Memphis RAM disc. Clicking on this entry will open a Filer window for Mem::Sprites.\$.

## Toolbar interaction

The MiniDisc toolbar offers an additional means of accessing the Memphis RAM disc.

The Memphis button added to the toolbar is able to perform a different action depending on which mouse button is clicked, or when a file or directory is dragged to it:

### Select mouse clicks

Clicking with 'Select' on the Memphis toolbar button will open a Filer window for Mem::Sprites.\$.

### Adjust mouse clicks

Click with 'Adjust' on the Memphis button to create a directory path menu for Mem::Sprites.\$.

### Drag and drop

Files and directories can be dragged to the Memphis toolbar button, and MiniDisc will save the files into your RAM disc for you.

Holding down the 'Shift' key whilst dragging a file will cause it to be moved rather than copied to it's new location.

☆ Note that the **Discs** configuration option **Don't try Public when dragging files to toolbar drive icons** will also affect where files are saved to when dragging them to the Memphis toolbar button.

☆ A full description of the MiniDisc toolbar can be found in the 'Toolbar' section, later in this guide.

## Connecting EPOC devices to RISC OS machines

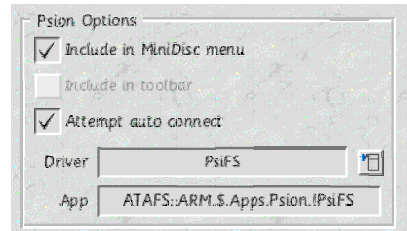
Psion computers developed an operating system (EPOC) that is in use in a variety of PDA's (and mobile phones). There are a number of third-party programs available that allow an EPOC based PDA to be connected to your RISC OS computer, allowing the transfer of files between the two.

If you own one of these PDA's, and have some appropriate software, then the discs of your EPOC machine can be 'seen' by RISC OS. In the same way that MiniDisc integrates the discs in your RISC OS machine, the PDA drives can be integrated into the main MiniDisc menu and toolbar.

☆ For MiniDisc to work with EPOC drives correctly, ensure that your PDA is correctly connected, it's link enabled, and some appropriate link software is available to ensure that RISC OS can 'see' the PDA.

## Configuring EPOC drive support

To customise how MiniDisc will interact with any EPOC based devices attached to your computer, select 'Psion' from the configuration picker in the choices window.



- Include in MiniDisc menu** - Ticking this option will enable EPOC device support in the main MiniDisc menu.
- Include in toolbar** - *EPOC device support has not yet been added to the MiniDisc toolbar facility.*
- Attempt auto-connect** - With this option enabled, MiniDisc will try to connect to your EPOC device as soon as it is run. Otherwise, your EPOC drives will be replaced by a **Connect** option, allowing you to connect to your EPOC device at will.
- Driver** - Select the EPOC connection software that MiniDisc will use by clicking on the menu selector icon.
- App** - Drag your EPOC connectivity software to this field to tell MiniDisc where to find the necessary drivers to support your EPOC hardware.

The bottom half of the Psion configuration window contains a different set of options, depending upon the driver selected.

## PsiRisc configuration

These options are specific to PsiRisc. They will only appear when you select 'PsiRiscFS' as your EPOC driver.



- Use #Raw' Psion drives** - PsiRisc supports '*Raw*' and '*Converted*' drives. Dragging a file from a converted drive on to a local drive will convert a file into an appropriate RISC OS format. Ticking this option will stop this action by using '*Raw*' (unconverted) drives.

## PsiFS configuration

These options are specific to PsiFS. They will only appear when you select 'PsiFS' as your EPOC driver.



- Hide RAM disc** - Some aspects of the EPOC operating system are stored in an internal RAM filing system (something like the Resources filing system of RISC OS). Enabling this option will cause MiniDisc to ignore these discs, only displaying your 'real' EPOC drives.

## EPOC drives in the main MiniDisc menu

Depending upon whether or not RISC OS has 'seen' your EPOC device, MiniDisc will place a different icon(s) in the

main MiniDisc menu:

### **Connect**

If RISC OS has not 'seen' your EPOC device, then MiniDisc will place a single menu entry labelled '**Connect**' in the main MiniDisc menu. Clicking on this entry will cause MiniDisc to try and connect to your EPOC device.

☆ Adjust clicks will not properly refresh the menu after clicking on '**Connect**'. You will need to re-open the main MiniDisc menu before your EPOC drives will appear.

### **EPOC discs**

If your EPOC device has been 'seen' by RISC OS, then MiniDisc will add a separate entry into the main menu for each drive found.

☆ PsiRiscFS supports two types of EPOC drive, 'Converted' and 'Raw' drives. By default, MiniDisc will open the root directory of the converted drive. If you select the '**Use #Raw**' drives' choices option, then MiniDisc will open a filer window for the root directory of the raw drive instead. See the PsiRisc manual for further information on converted and raw drives.

## Control submenu options

Following the submenu arrow from an EPOC drive in the main MiniDisc menu will display a drive control menu.

### **Path menus**

The first entry in an EPOC drive control menu is a directory navigation tool. Clicking on this item will open a filer window for the specified drive. Following the submenu arrow will generate a hierarchical directory menu of the root ('\$') directory for that drive, allowing you to navigate it's directory structure.

### **Free**

Clicking on this menu entry will display a filer-like 'Free Space' window, showing you the amount of free / used space on the selected drive of your EPOC device.

### **Disconnect**

Click on this menu entry to disable the connection between your EPOC device and RISC OS.

## Toolbar interaction

*Toolbar support for EPOC drives has not been implemented in this version of MiniDisc.*

## Integrating network drives

There are a number of different ways in which you can access shared data from your RISC OS computer. Each of these different ways uses a different networking *protocol*, used to communicate with the remote computer whose data you want to access.

MiniDisc currently supports the **Acorn Access** (also referred to as **ShareFS**) file sharing protocol that allows RISC OS computers connected to a network to share information and resources. Any information shared using Access can be integrated into MiniDisc, appearing and functioning in the same way as any other local storage device.

## Configuring Acorn Access / ShareFS support

To customise how MiniDisc will interact with ShareFS, select 'Networking' from the configuration picker in the choices window.

The top frame in this window controls ShareFS configuration.



- Include in MiniDisc menu** - Ticking this option will make MiniDisc add an entry into the main MiniDisc menu for each shared disc available via ShareFS.
- Include in toolbar** - With this option enabled, MiniDisc will add a button to the toolbar for each shared disc available via ShareFS.
- Remove iconbar icons** - Tick this option to have MiniDisc remove the ShareFS filer icon, and any shared drive icons from the iconbar, then put them back again when quit.
- Suppress local shares** - With this option enabled, MiniDisc will only show shared discs in the main MiniDisc menu, and on the toolbar for shares on other computers, hiding any resources that may have been shared out on the local machine.

## Shared drives in the main MiniDisc menu

MiniDisc can add a separate entry into the main menu for each shared disc available via ShareFS. Clicking on these menu entries will open a filer window for the root '\$' directory of that disc.

### No shared resources available

If there are no shared resources available (or only local shares, and the '*Suppress local shares*' option is enabled), then MiniDisc will put a single icon in the main menu. Clicking on this icon will have no effect. The purpose of this icon is to allow the user to gain access to the ShareFS drive control sub-menu (described in detail below).

### Shared discs

If there are shared resources available, then MiniDisc will place an icon and name for each in the main menu. The icon displayed will differ, depending on the permissions granted on that disc:



#### **Unprotected shares**

An unprotected share allows you to both read and write files and directories to and from it.



#### **Read-only shares**

A read-only share will allow you to access files and directories, but will not allow you to alter or delete anything.



#### **Shared CD ROM discs**

A shared CD ROM disc is essentially the same as a read-only share, but flagged differently to distinguish between shared CD ROM discs, and 'normal' read-only shares.



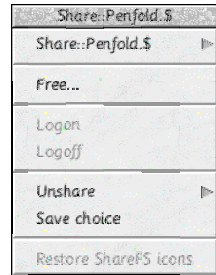
#### **Protected shares**

A protected share will allow you to access files and directories on a remote machine, with access restricted according to the **Public** access rights assigned to those files or directories.

## Control submenu options

Following the sub-menu arrow from a shared disc in the main menu will display a ShareFS disc control menu, similar to the one shown here on the right.

☆ See the 'Other configuration options' section for further details on how to suppress ShareFS disc control sub-menus.



### Path menus

The first entry in a ShareFS disc control menu is a directory navigation tool. Clicking on this item will open a filer window for the specified disc. Following the submenu arrow will generate a hierarchical directory menu of the root ('\$') directory for that disc, allowing you to navigate it's directory structure.

### Free...

Clicking on this menu entry will display the standard RISC OS drive free space window for the selected shared disc.

☆ This will work with whatever free space utility you may have loaded. e.g. druck's **FreeMap** utility.

### Logon

*User-based Access+ facilities are not yet supported in this version of MiniDisc.*

### Logoff

*User-based Access+ facilities are not yet supported in this version of MiniDisc.*

### Unshare

This menu entry leads to a sub-menu, listing all of the shared discs on the local machine. Clicking on an entry in the sub-menu will stop the named resource from being shared with other computers on the network.

### Save choice

Clicking this menu entry will cause MiniDisc to save details of the shared resources on the local machine to a file.

This file will be reloaded when MiniDisc starts, thereby restoring the shared discs on your machine, making them available to other computers on the network.

### Remove / Restore ShareFS icons

*Not implemented in this version of MiniDisc.*

The last menu entry will offer either a remove or restore icons option, depending upon whether or not ShareFS has disc icons on the iconbar. Clicking on this menu entry will remove or restore the ShareFS filer and disc icons to or from the iconbar.

☆ This option has been disabled in the current version of MiniDisc as it would seem to be unstable with certain filing systems.

## Toolbar interaction

The MiniDisc toolbar offers an additional means of accessing shared discs available to your machine. MiniDisc is able to add a button to the toolbar for each network resource available to your machine.

Each shared drive button added to the toolbar is able to perform a different action depending on which mouse button is clicked, or when a file or directory is dragged to it:

### Select mouse clicks

Clicking with 'Select' on a shared network drive button will open a Filer window for the root directory of that network resource.

### Adjust mouse clicks

Click with 'Adjust' on a shared network drive button to create a directory path menu for the root directory of the selected network resource.

### Drag and drop

Files and directories can be dragged to network share buttons in the toolbar and MiniDisc will save the files to that network drive for you.

Holding down the 'Shift' key whilst dragging a file will cause it to be moved rather than copied to it's new location.

☆ Note that the *Discs* configuration option **Don't try Public when dragging files to toolbar drive icons** will also affect where files are saved to when dragging them to network disc toolbar buttons.

☆ A full description of the MiniDisc toolbar can be found in the 'Toolbar' section, later in this guide.

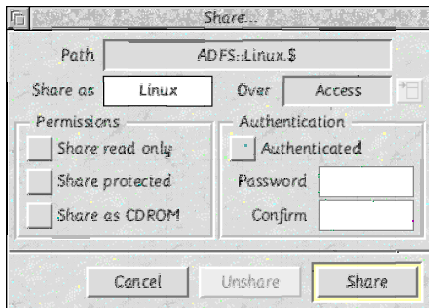
### Sharing discs, CD ROMs and directories

You can share a disc or a CD ROM by clicking on the **'Share...'** entry in a MiniDisc drive control sub-menu.

RISC OS 4 users can click on the **'Share...'** entry in a filer windows' menu to open the MiniDisc share window, allowing you to share specific directories rather than whole discs.

The **'Share as'** icon allows you to choose the name by which other computers on the network 'see' the shared resource.

If the selected disc or directory is already shared, then MiniDisc will enable the **'Unshare'** button, otherwise the default (**'Share'**) will be enabled.



#### Over

*This option has been disabled in the current version of MiniDisc.*

In future versions of MiniDisc, the networking facilities will be extended to include other protocols. You will be able to use this option to choose which protocols to make this resource available over.

#### Permissions

This section allows you to specify how the selected resource will be shared with other computers on the network. If none of these options are set, then a normal (read/write, unprotected) share will be created.

☆ See the 'Shared discs' section earlier in this chapter for a description of what each of these options mean.

#### Authentication

*Authenticated (password-protected) shares are not supported in this version of MiniDisc.*



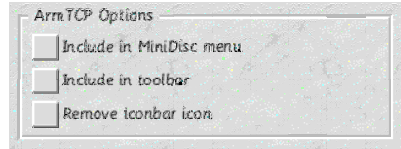
## Controlling dial-up connections with ArmTCP

ArmTCP is a popular piece of free software for dial-up internet connection management. Once again, MiniDisc is able to remove it's icon from the iconbar and integrate it's facilities into the main MiniDisc menu.

## Configuring ArmTCP support

To customise how MiniDisc will interact with ArmTCP, select 'Networking' from the configuration picker in the choices window.

The bottom frame in this window controls ArmTCP configuration.



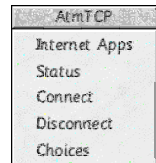
- Include in MiniDisc menu** - Tick this option to add an icon into the main MiniDisc menu for ArmTCP.
- Include in toolbar** - With this option enabled, MiniDisc will add a button into the toolbar for ArmTCP.
- Remove iconbar icon** - Ticking this option will cause MiniDisc to remove the ArmTCP icon from the iconbar when MiniDisc starts, then restore it once again when MiniDisc is quit.

## ArmTCP in the main MiniDisc menu

With the '**Include in MiniDisc menu**' option (described above) enabled, the main MiniDisc menu will show an entry for ArmTCP. Clicking on this entry is the equivalent of clicking on ArmTCP's iconbar icon; the 'Connection status' window will either be shown or hidden, depending if it is currently on screen or not.

## Control submenu options

Following the submenu arrow from the ArmTCP entry in the main menu will display an ArmTCP control menu, similar to the one shown here on the right.



### Internet Apps

Clicking on this option will open the ArmTCP 'Internet Apps' window from where you can launch other internet related programs.

### Status

This option has the same effect as clicking on the ArmTCP icon in the main MiniDisc menu, described above.

### Connect

Clicking on this option will cause ArmTCP to attempt to make an internet connection between your computer and it's default internet service provider (ISP) setting.

### Disconnect

Click on 'Disconnect' to end the current dial-up connection session.

### Choices

Click on this menu entry to open the ArmTCP configuration window.

☆ See the ArmTCP manual for further information on using and configuring ArmTCP.

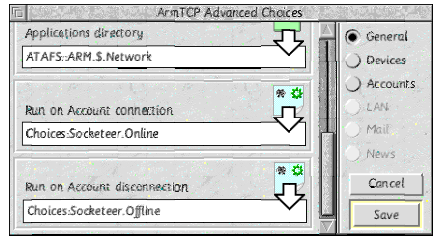
## Connection status display

When ArmTCP makes a connection to the internet, it's icon changes to reflect the connection status. Unfortunately, if MiniDisc has been configured to remove the ArmTCP icon from the iconbar, then this will not be visible. MiniDisc will therefore change it's own iconbar icon to show when a connection has been established.

For the status to be shown correctly, the system variable `<InterNet$Connection>` must be set.

If this variable is set to 1 (using the command `"*Set Internet$Connection 1"`) then MiniDisc will show that the connection is active.

The simplest way of achieving this is to create two Obey files, call them something like "Online" and "Offline". Save them to somewhere sensible on your harddisc, then add them into the ArmTCP configuration as shown here.



### Toolbar interaction

The MiniDisc toolbar offers an additional means of controlling ArmTCP and your internet connections.

The ArmTCP toolbar button is able to perform a different action depending on which mouse button is pressed:

#### Select mouse clicks

Clicking with Select on the ArmTCP toolbar button has the same effect as clicking on the ArmTCP icon in the main MiniDisc menu, showing or hiding the ArmTCP connection status window.

#### Adjust mouse clicks

Clicking Adjust on the toolbar button will either establish your default ArmTCP internet connection, or disconnect it, depending upon it's current state.

☆ A full description of the MiniDisc toolbar can be found in the 'Toolbar' section, later in this guide.

## Introduction

Previous versions of MiniDisc used Nick Craig-Woods' Director application for the generation of icons and menus. Many users were put-off using MiniDisc due to the complexities of Director.

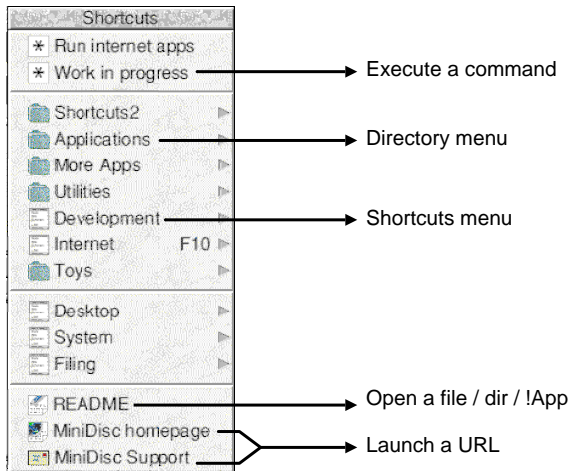
### Introducing MiniDisc Shortcuts...

The concept isn't a new one. Essentially, Shortcuts are another form of application launcher for RISC OS. The reasons for developing a shortcuts facility for MiniDisc were twofold:

- 1 To ease the move away from Director for hardened users with many menus that MiniDisc could not previously provide.
- 2 To appeal to users that found Director over-complicated, and to build a way for the relative novice to create their own Shortcuts menus with ease.

## What is a Shortcuts menu?

A Shortcuts menu will look something like this:



### Execute a command

This Shortcut will execute any OS \* command as a new WIMP task. Useful if you have an obey file containing a series of commands. e.g. the top option in the menu shown here will execute an obey file that I have written to check to see which of my favourite internet programs are currently running, and will launch any that are not.

### Directory menu

This Shortcut will generate a submenu that will allow you to traverse a hierarchical directory structure. Clicking on entries in a directory menu will 'Filer\_Run' them.

### Shortcuts menu

This Shortcut will attach another Shortcuts menu as a submenu of this one, allowing you to create a complex set of linked Shortcuts menus.

### Open a file, directory or application

This Shortcut type is the 'Application launcher' element of MiniDisc Shortcuts, enabling you to attach any file or directory to a Shortcuts menu. The menu item will be 'Filer\_Run' when clicked upon.

### Launch a URL

This Shortcut type will send any valid URL to the AcornURI module that will then dispatch a message to an appropriate internet program to fetch the information for you.

☆ If the URL begins with 'mailto:' then an envelope icon will be used instead of a web page icon.

## Configuring Shortcuts

To customise the MiniDisc Shortcuts facility, select 'Shortcuts' from the configuration picker in the choices window.

### General Shortcuts Options

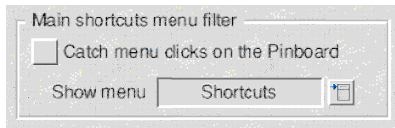


- Include in MiniDisc menu** - Tick this option to include the main Shortcuts menu in the main MiniDisc menu.
- 'Quick-drag' adds in shortcuts builder** - Normally, dragging a file to the Shortcuts builder window will open a window allowing you to configure details of the new shortcut. However, MiniDisc will try to come up with sensible defaults for this window for you. If you tick this option, the file you drag to the builder window will be created using the default values determined by MiniDisc, without you having to fill-in details in the 'Update shortcut' window first. This option can be handy, speeding up the building of Shortcuts menus.
- Menu position** - This option determines where in the main MiniDisc iconbar menu the Shortcuts option will appear. You can choose between the Shortcuts menu appearing at the top or the bottom of the main MiniDisc menu.

### Pinboard Filter

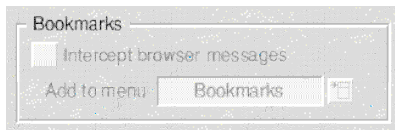
MiniDisc can intercept menu clicks on the Pinboard, and display a Shortcuts menu. Tick this option, and select a Shortcuts menu to enable this facility.

☆ Menu clicks over icons (pinned or iconised) on the Pinboard will still generate the normal Pinboard menu. Only menu clicks over the Pinboard backdrop will generate a Shortcuts menu.



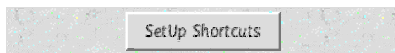
### Bookmarks

*These options have not been implemented in this version of MiniDisc.*



### SetUp Shortcuts

The bottom of the Shortcuts configuration window contains a button that will launch the Shortcuts Builder utility (described below).



## The Shortcuts Builder utility

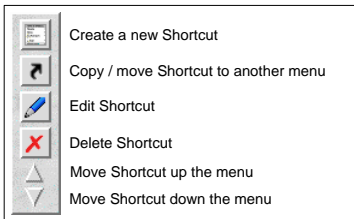
The Shortcuts Builder is a WYSIWYG drag-n-drop utility for the quick-and-easy creation of Shortcuts menus. It can be launched either by clicking on the 'Shortcuts' item in the main menu, or by clicking on the 'SetUp Shortcuts' button in the Shortcuts configuration window (as shown above).

The Shortcuts Builder window will open, looking a little like the one shown here on the right. MiniDisc is able to cope with the creation of many Shortcuts menus, but the Builder focuses on editing one menu at a time.

The main window (shown here on the left) shows a WYSIWYG (what-you-see-is-what-you-get) display of the Shortcuts menu currently being edited.

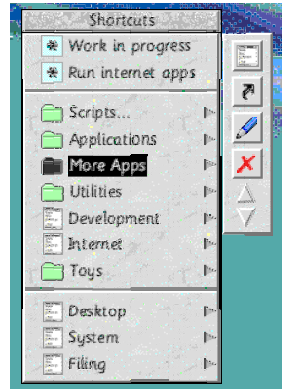
☆ Drag files and directories to the main window to create new Shortcuts. If an existing Shortcut is highlighted, then the new Shortcut will be added just below it, otherwise it will be added to the bottom of the menu.

☆ Double-clicking on an entry will open a Shortcut editing window, allowing you to alter it's settings.



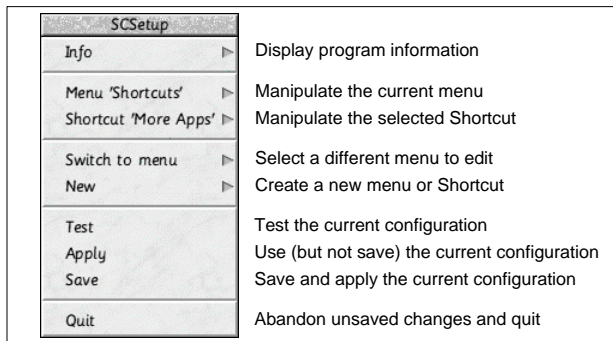
☆ Single-clicking on an entry in the main window will highlight it. You can then use the toolbar to manipulate the Shortcut settings.

Clicking on the icon in the toolbar opens the 'New Shortcut' menu, allowing you to choose the type of Shortcut to create.



Clicking **MENU** over the main builder window will open a menu allowing you to manipulate Shortcuts and menus.

Using the '**Test**' option will cause MiniDisc to temporarily use the Shortcuts settings currently being edited, displaying the selected Shortcuts menu.



## Creating and editing menus

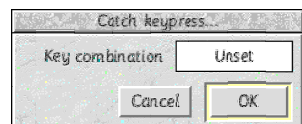
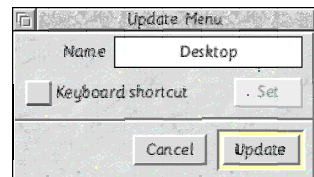
After choosing to create a new, or edit an existing Shortcuts menu, a window will be displayed, similar to the one shown here.

Enter the name to recognise this menu by in the '*Name*' field. Note that this is the **internal** name for this menu. If you attach this menu to another as a sub-menu, then the description in the 'parent' menu can be different if you so choose.

MiniDisc is able to open a Shortcuts menu when you press a pre-defined key. To enable this feature, select the '*Keyboard shortcut*' option.

Clicking on the '*Set*' button in the '*Update menu*' window (above) will display the window shown here on the right.

Pressing any key (with or without Shift/Ctrl/Alt modifiers) will record which key presses will cause MiniDisc to display the selected Shortcuts menu.



## Creating and editing Shortcuts

After choosing the type of new Shortcut to create, or selecting to edit an existing Shortcut, an edit window will appear, allowing you to alter its appearance and behaviour.

The contents of the Shortcut edit window will vary, depending upon the type of Shortcut:

### Execute a command

- Label** - The name that will appear in the Shortcuts menu.
- Command** - The \* command to execute.
- Rule-off** - Draw a line below this entry in the Shortcuts menu.
- ☆ **Keyboard shortcuts are not implemented in this version of MiniDisc.**

### Directory path menu

- Label** - The name that will appear in the Shortcuts menu.
- Pathname** - The top-level directory name.
- Rule-off** - Draw a line below this entry in the Shortcuts menu.
- ☆ **Keyboard shortcuts are not implemented in this version of MiniDisc.**
- Allow inside app directories** - Tick this option to allow directory traversing into application directories.
- Suppress application !'s** - Ticking this option will hide the '!' from application names in the selected directory path menu, displaying them in a more user-friendly way.
- ☆ This option is only available if the previous option is disabled.

### Shortcuts sub-menu

- Label** - The name that will appear in the Shortcuts menu.
- Sub-menu** - Click on the menu icon to select the Shortcuts menu that will be displayed when this entry is clicked upon or the sub-menu followed from the current Shortcuts menu.
- Rule-off** - Draw a line below this entry in the Shortcuts menu.

### Open a File / Directory / App

- Label** - The name that will appear in the Shortcuts menu
- Filename** - x
- Rule-off** - Draw a line below this entry in the Shortcuts menu
- ☆ **Keyboard shortcuts are not implemented in this version of MiniDisc.**

### Launch a URL

- Label** - The name that will appear in the Shortcuts menu
- URL** - x
- Rule-off** - Draw a line below this entry in the Shortcuts menu
- ☆ **Keyboard shortcuts are not implemented in this version of MiniDisc.**

## Shortcuts in the MiniDisc toolbar

The MiniDisc toolbar offers an additional way of launching applications or executing commands, or any other operation that can be performed via MiniDisc Shortcuts. Use the configuration window to specify a set of Shortcuts to add to the toolbar by specifying a Shortcuts menu. MiniDisc will then add a button to the toolbar for each entry in the specified Shortcuts menu.

Each Shortcut button added to the toolbar is able to perform a different action depending on the type of Shortcut, which mouse button is clicked, or if a file is dragged to it:

- **Select mouse clicks**

Clicking with Select on a Shortcut button in the toolbar will have exactly the same effect as if you had clicked on it's entry in a Shortcuts menu (see above).

- **Menu mouse clicks / switching toolbar buttons**

Clicking with Menu over a Shortcuts toolbar button will generate a menu that will allow you to change the Shortcuts menu currently being used for toolbar buttons. Select an alternate Shortcuts menu from the list and MiniDisc will rebuild the toolbar using the specified Shortcuts menu for it's buttons.

This feature offers a quick and easy way of switching the toolbar functionality to suit whatever you may be doing at a particular time. e.g. You could have separate Shortcuts menus defined for '*DTP*', '*Internet*' and '*Photo work*'. Clicking menu over the toolbar will quickly let you select the buttons most appropriate to the task in hand.

☆ The default Shortcuts menu used for toolbar buttons is specified in the 'Toolbar' configuration window. Whenever you reload MiniDisc, the toolbar will return to using the Shortcuts menu specified there.

- **Adjust mouse clicks**

Toolbar buttons offer the opportunity to enhance the functionality of a Shortcut by performing a different function if 'Adjust' is clicked on a button.

Currently, clicking with Adjust on a Command, Menu or URL Shortcut will perform the same actions as with Select.

- **Path Shortcuts**

Clicking with Adjust on a directory path menu Shortcut will open a Filer directory window for the specified path.

- **File / Directory / Application Shortcuts**

Clicking with Adjust on a File/Dir/App Shortcut will cause MiniDisc to generate a directory path menu for the directory in which the specified file, directory or application resides.

☆ A full description of the MiniDisc toolbar can be found in the 'Toolbar' section, later in this guide.

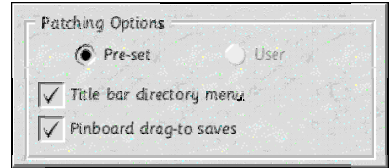
## Introduction to desktop patches

As a result of other enhancements, MiniDisc has had to learn how to intercept events (mouse clicks, key presses etc.) before RISC OS has the opportunity to pass them on to other programs. Desktop patches are in their infancy in the current version of MiniDisc, and will be extended to allow the user to define their own actions in a later release.

## Configuring desktop patches

To enable / disable the desktop patches that MiniDisc will apply to RISC OS, select 'Patches' from the configuration picker in the choices window.

Currently, you can only configure the MiniDisc 'pre-set' patches.

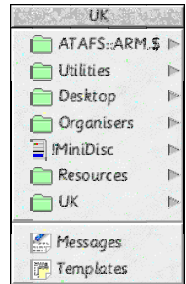


## Title bar directory menu

MiniDisc will intercept mouse clicks with the MENU button. If the pointer is over the title bar of a window at the time, then the text in the title-bar will be examined. If a valid RISC OS directory path can be found then MiniDisc will generate a directory path menu for that directory. This menu will be similar to those generated elsewhere, but it will also include a parent directory list.

The example here on the right shows a title-bar directory path menu generated after clicking MENU over the 'UK' directory. Below the line are files (and possibly directories) that exist in that directory. Above the line are the parent directories of 'UK'. Reading down the list of parent directories, it is possible to re-build the full path name of the current directory. In this case, the full directory path name is:

```
ATAFS::ARM.$ .Utilities .Desktop .Organisers .!MiniDisc .Resources .UK
```



As you can see, these directory menus not only allow you to navigate the current directory, its files and sub-directories, but also to navigate back up the directory tree, enabling very quick navigation of your disc structures.

## Pinboard drag-to saves

The RISC OS Pinboard is a useful place for 'pinning' files or directories for easy access. It has one small drawback however, in that you can only 'pin' files or directories that already exist somewhere on disc. i.e. you cannot drag a file from a 'Save-as' window to the Pinboard because it does not yet exist anywhere on any of your discs.

MiniDisc is able to intercept a file being dragged to the Pinboard from a 'Save-as' window and save it into a special folder, then 'pin' that file to the Pinboard for you.

This 'Special folder' is stored within the MiniDisc application. It is important to be able to gain access to this folder, so that files saved to the Pinboard may be moved elsewhere, or deleted. There are two suggested ways in which you can gain access to this folder:

- 1 Shift double-click on the !MiniDisc icon in a filer window, then double click on the !Desktop application to open the special folder.
- 2 Use the System variable `<MiniDisc$Desktop>` to gain access to the special folder. This can then be used in a command like `*Filer_OpenDir <MiniDisc$Desktop>` to open a filer window for the special folder. This command is included in the default 'Shortcuts' menu, but could just as easily be attached to the toolbar, added as an action on iconbar clicks, or simply entered at the command line.

## Re-pinning the contents of the special folder

After rebooting your computer, any files previously pinned to the desktop will have been removed, thus you will no longer have access to those files saved. MiniDisc solves this problem by re-pinning all files in the special folder back on to the desktop when it starts up.



## A button toolbar for your desktop

Application launching programs on RISC OS vary in how they present themselves to the user. Many of these programs use a 'toolbar' idea where clicking on a 'button' will execute a command or launch some program.

In response to user requests, MiniDisc now has a toolbar that incorporates all of the facilities available elsewhere (disc integration, Shortcuts etc.) and adds a few more features to take full advantage of the toolbar concept.

## Introducing the MiniDisc toolbar

The MiniDisc toolbar is a versatile addition to MiniDisc's features list. For those users more comfortable with an application launching tool that is readily accessible, functioning in a more traditional way, the MiniDisc toolbar may be just what you are looking for!

Once again, MiniDisc has tried to enhance the normal toolbar idea by incorporating its unique device replacement features, allowing you to open, navigate and save files to your machines storage devices via toolbar buttons. No more hunting for the iconbar!

☆ For details on the precise filing system interactions, see the separate sections which describe in detail how each button 'type' works.

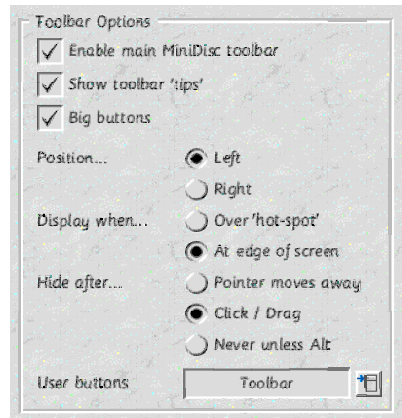


## Configuration

The toolbar has been designed to be flexible in its appearance and functionality to meet the needs and personal preferences of the user.

To customise the appearance and behaviour of the MiniDisc toolbar, select 'Toolbar' from the configuration picker in the choices window.

The following sub-sections will describe in detail how each of the options affect the MiniDisc toolbar.



### Enable main MiniDisc toolbar

Ticking this option will enable the MiniDisc toolbar. If you don't want to use this facility, then just switch it off, and it won't bother you again.

### Show toolbar 'tips'

Whilst moving the pointer over toolbar buttons, MiniDisc will display a toolbar 'tip' in a small window just beside the mouse pointer. Toolbar 'tips' will show you useful information about the button that the pointer is currently over. This will usually be the name of the disc if you are hovering over a 'drive' button, but the Shortcut label for Shortcuts. Generally, you will probably want to keep this option enabled (it is by default), but with a customised set of toolbar buttons (see later), you may feel that you can identify your toolbar buttons quickly enough by sight alone. This option allows you to disable toolbar 'tips' if you feel that you can do without them.

### Big buttons

Depending upon your preferred screen resolution, you may want to fit more or less buttons in to the toolbar. By default, MiniDisc will use a set of small toolbar buttons, these are about the same size as the small icons used in filer windows. Enabling this option will cause MiniDisc to use a larger set of icons, about the same size as the large icons used in filer windows.

**Position**

This option allows you to specify whether the toolbar will appear on the far left or right of the screen.

**Display when**

These options allow you to specify when the toolbar will be displayed.

- **Over 'hot-spot'**

Selecting this option will cause MiniDisc to display the toolbar when the pointer moves into the toolbar 'hot-spot'. The 'hot-spot' is the area of the screen where the toolbar appears, but slightly larger, thus as you move the pointer close to the area of the screen where the toolbar lives, it will be displayed on screen.

- **At edge of screen**

With this option selected, MiniDisc will only display the toolbar if the pointer is moved to the edge of the screen (left or right, depending upon configuration).

**Hide after**

These options allow you to specify when MiniDisc will hide the toolbar.

- **Pointer moves away**

With this option enabled, the toolbar will remain on screen until the pointer is moved outside of the toolbar 'hot-spot'.

- **Click / Drag**

Selecting this option will cause MiniDisc to hide the toolbar as soon as a button is clicked upon, or a file is dragged to the toolbar.

- **Never unless 'Alt'**

Choosing this option will cause the toolbar to become semi-permanent. The toolbar will remain visible unless you press the left 'Alt' key. Once Alt is pressed, the toolbar will reappear based upon the 'Display When' options described above, staying visible until Alt is next pressed.

**User buttons**

This option enables you to add the contents of a Shortcuts menu to the top of the toolbar. Click on the menu icon to display a list of Shortcuts menus. Select an entry from the list to set the Shortcuts menu to use.

**Hiding the toolbar.**

A potential problem with the toolbar 'popping-up' is that it can have a tendency to do just that precisely when you don't want it to. If this happens, then press the left 'Alt' key, and it will disappear again as quick as it popped-up!

**Customising toolbar buttons**

By default, the toolbar will use the same icon in toolbar buttons for all of your storage devices. MiniDisc is able to use different icons for different toolbar buttons to make it easier to identify your storage devices.

**Customised Sprites**

MiniDisc stores the customised button sprites in a different file, depending on your operating system and preferred screen resolution:

OS / Screen resolution	Custom icons stored in...
RISC OS 3 (rectangular pixel)	!MiniDisc.Resources.Sprites
RISC OS 3 (square pixel)	!MiniDisc.Resources.Sprites22
RISC OS 4	!MiniDisc.Resources.Sprites4

**NOTE:** This version of MiniDisc is supplied with a small set of custom icons for RISC OS 4 users only. For the time being, RISC OS 3 users will have to create their own customised sprites and add them into the appropriate file as defined above (see the RISC OS 4 file for examples).

- **Button sprite names**

Within the appropriate sprites file, there must be two sprites for each button. The names of these sprites must match the following naming convention:

Sprite name	Used for...
b_myicon	Big toolbar button sprite for 'myicon'
smb_myicon	Small toolbar button sprite for 'myicon'

☆ If you're planning on creating your own custom sprites, and you know that you'll only be using one size of toolbar button, then you need only create sprites for the appropriate size buttons. e.g. If you'll only be using the small toolbar, then you only need to design the '**smb\_xxxx**' sprites etc...

### Specifying a customised button sprite

Within your MiniDisc choices directory ('Choices:MiniDisc'), create a text file called 'Icons'.

Here is an example of an 'Icons' file:

```
# MiniDisc custom icons file.

# Custom hard-drive icons
ADFS::4          myicon
RMFS::Work       dev
RMFS::Photos     mypics

# Custom CD ROM icons.
CDFS::0          cddrive0
CDFS::AWCD       cdawcd

# Custom network drive icons.
Share::RPC2      fserv
```

Comment lines in the file start with a '#' and are ignored.

The first part of a custom *sprite mapping* describes the drive that you wish to use a customised sprite for. You can use the filing system name or number here. This can be useful if you have a Zip drive or other removable filing system, as you can specify an icon for the disc, rather than the drive. In the example above, a different toolbar sprite will be used when the Zip disc with the label '**Work**' is in the drive, and a different one again for the '**Photos**' disc.

You separate the drive specification on the left from the sprite mapping on the right by at least one space or tab.

The right hand side of a mapping specifies the customised button sprite to use for the specified drive.

**NOTE:** This is the generalised button name, **without** the leading button size specifier. Take the first mapping in the example above:

```
ADFS::4          myicon
```

This specifies a customised icon for the 'ADFS::4' disc. MiniDisc will then choose the appropriate toolbar sprite to use, depending upon the 'size' of the toolbar:

- If the 'Big' buttons configuration option is enabled, then MiniDisc will use the '**b\_myicon**' sprite.
- If the standard (small) toolbar is being used, then MiniDisc will use the '**smb\_myicon**' sprite.

## Iconbar 'smart' file saving utility

Amongst the actions that MiniDisc is able to perform on files dragged to it's iconbar icon is a 'smart' file save. This is very similar to the simple 'Copy/Save' option where a file will be saved into a specified directory.

The 'Smart' feature is that you are able to specify a different place to save files of different types, allowing you to copy / download files and quickly save them to disc in an organised way.

## Using the 'Smart' file saver

To begin using the smart saver, you will first need to configure an iconbar 'drag-to' action to use 'SmartSave'. Once enabled, dragging files to the MiniDisc iconbar icon will copy / save them into a specified directory for you.

- Files dragged from a programs 'Save As' window will be **saved** into the specified directory.
- Files dragged from a filer window will be **copied** into the specified directory.
- Files dragged from a filer window whilst holding down the '**Shift**' key will be **moved** into the specified directory.

☆ See the 'Iconbar' section for information on how to configure iconbar 'drag-to' actions.

## Path mappings

To determine which types of files are saved into which directories, MiniDisc will 'map' a specific file type to a directory. For example:

File type	... maps to
Default (unmapped)	ADFS::4.\$Public
Impression	ADFS::4.\$Documents
Archive	ADFS::4.\$Public.Downloads

In this way, any file can be dragged to the MiniDisc icon. If a direct path mapping is found between the type of file dragged, and a specified directory, then MiniDisc will save the file into that directory.

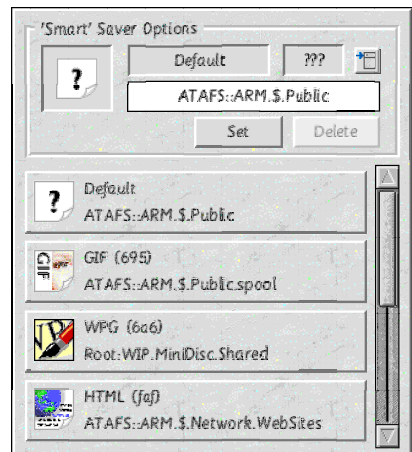
The 'Default' path mapping will be used for files of a type where a specific path mapping has not been defined.

## Configuring 'Smart' file saver path mappings

To configure MiniDisc's 'smart' file saving facilities, select 'SmartSave' from the configuration picker in the choices window.

The top of the window contains the smart saver path mappings edit pane. This is used to add, update or remove smart saver path mappings.

The bottom of the window contains the path mappings list / selector pane. This is a scrolling window that lists all of the path mappings currently defined.



## Selecting a file type

To begin specifying path mappings, you will first need to tell MiniDisc the type of file you would like to configure.

This can be done in one of four ways:

- 1 Drag a file from a filer window on to the smart saver path mappings edit pane. This will select the file type to edit, and also populate the path mapping field for you with the name of the directory that the file was dragged from.
  - 2 Clicking on an existing path mapping in the mappings list pane will populate the edit pane with that file type's mapping information.
  - 3 Clicking on the menu icon in the right of the edit pane will generate a 'quick list' of file types to choose from. Following the 'Other' submenu arrow will create a complete list of all file types that RISC OS understands. Clicking on any of these will set the file type in the edit pane. If the selected file type already has a path mapping defined, then this will be shown in the mapping field, otherwise the mapping field will be left blank.
  - 4 Either of the file type 'name' or 'number' fields in the edit pane can be typed into to specify a new file type path mapping to edit. If the selected file type already has a path mapping defined, then this will be shown in the mapping field, otherwise the mapping field will be left blank.
- ☆ The file type 'number' field may not be typed into when editing the 'Default' file type.

### **Specifying a path mapping**

Once a specific type of file has been selected, you can specify a path mapping for files of that type.

This can be done in one of two ways:

- 1 The path mapping can be typed directly into the mapping field in the edit pane.
- 2 Drag a file or directory to the mapping field. If a file is dragged, then the mapping will be made to the directory that the file is saved in. If a directory is dragged, then the mapping will be made to that directory.

### **Adding / removing path mappings**

Once you have selected a file type and associated a path mapping with it, then click on '**Set**' to store it's details. After clicking on '**Set**', the path mapping will be added to the selector pane, or if a mapping already exists, it will be updated.

Clicking on '**Delete**' will remove the path mapping record for the specified file type.

☆ Although you are able to change it, you cannot delete the 'Default' path mapping, as MiniDisc always needs to know where to save files that do not have an associated path mapping.

# Other configuration options

## Introduction

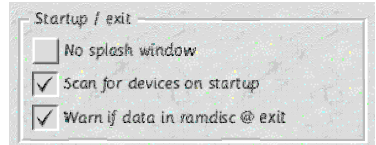
This section covers a number of miscellaneous configuration options not described elsewhere, a little about the other configuration files that MiniDisc uses in its **Choices** directory, and introduces the RISC OS Select configuration plug-in.

## Miscellaneous configuration options window

There are a number of general MiniDisc configuration settings which have not been described elsewhere in this guide. To change these options, select 'Miscellaneous' from the configuration picker in the choices window.

### Startup / exit

These options control a number of aspects of how MiniDisc behaves when run, and what happens when the application is quit.



#### • No splash window

MiniDisc will display a 'splash' screen as it starts, displaying progress information. If you do not want to show this window, then tick this box.

#### • Scan for devices on startup

Ticking this option will make MiniDisc scan your machine for any attached hard discs or other storage devices at startup. This will mean that RISC OS will be aware of all of your devices straight away, making the generation of the main MiniDisc menu slightly quicker. I would strongly advise that you keep this option enabled. Unfortunately, some interfaces (especially SCSI) will take ages trying to look at devices even when they are switched-off / empty. If you find MiniDisc takes a long time to scan your devices at startup, then disable this option.

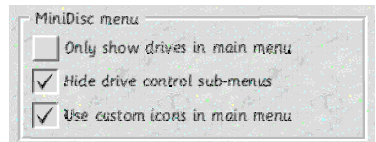
☆ You can see the progress of MiniDisc starting up if you make sure that the aforementioned '**No Splash Window**' option is disabled. Look out for messages of the form '**Scanning SCSI devices...**'.

#### • Warn if data in ramdisc at exit

If you use MiniDisc to manage a RAM filing system (RAMFS or MemFS), then the desktop front-end for these programs are removed, being replaced by MiniDisc. The downside of this is that these programs are unable to warn you that files still exist in a RAM disc when you shut down your machine. Tick this option if you would like MiniDisc to check them for you, and let you know before the machine is shutdown.

## MiniDisc menu

These options are used to further customise the appearance and functionality of the main MiniDisc menu.



#### • Only show drives in main menu

Ticking this option will remove the **Info**, **Help**, **Choices** and **Quit** entries from the main MiniDisc menu, leaving just a menu of devices attached to your machine. To temporarily re-enable them, simply hold down the '**Alt**' key when you click '**Menu**'.

☆ When this option is not ticked, holding down the '**Alt**' key has the opposite effect. i.e. **Info** etc. will be (temporarily) hidden.

#### • Hide drive control sub-menus

Ordinarily, following the submenu for an attached device from the main MiniDisc menu will open a '**drive-control**' menu, with options for '**Name Disc**' etc... Ticking this option will take you directly to the root directory of your harddiscs, making navigating your drives a little quicker. To temporarily re-enable control submenus, hold down '**Alt**' when following the submenu arrow.

☆ When this option is not ticked, the opposite is also true. i.e. Holding down '**Alt**' will hide the drive control submenu.

- **Use custom icons in main menu**

With this option ticked, you can configure customised icons for your storage devices in the main MiniDisc menu.

**Note:** You should read the section on '**Customising toolbar buttons**' first if you would like to use this facility.

- **Customised Sprites file**

If you wish to use custom drive sprites, then they should be saved into a file named 'Sprites' in your MiniDisc:Choices directory.

☆ MiniDisc is supplied with a sample set of additional sprites for RISC OS 4 users in the 'MenuIcons' directory within the distribution archive that you can copy. RISC OS 3 users will have to create their own customised menu sprites for the time being.

- **Customised menu sprite names**

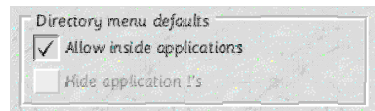
Inside your sprites file, you will need to create your menu sprites with names prefixed by 'md\_'.  
e.g. 'md\_myicon'.

- **Specifying customised menu sprites**

Specifying the mapping between drives and customised icons for menu sprites is performed in the same way as for customised toolbar buttons.

## Directory menu defaults

These options control the appearance and functionality of MiniDisc directory path menus.



☆ All directory path menus generated from a Shortcuts menu allow you to specify the next two options on a menu-by-menu basis. There are however a number of additional places where MiniDisc can generate directory path menus (from clicks on the iconbar icon, from window title-bar menus, filters etc...). The next two options are for configuring directory menus not generated from a Shortcuts menu:

- **Allow inside applications**

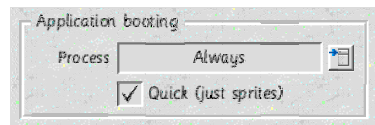
With this option ticked, a directory path menu will allow you to traverse the directory structure inside applications.

- **Hide application !'s**

This option is only available if the previous option is disabled. It will remove the '!' from application names in directory path menus, displaying them in a more user-friendly way.

## Application booting

These options control how MiniDisc handles directory path menus which contain applications that have yet to be seen by the filer.



- **Process**

Click on the menu selector icon to the right to choose how MiniDisc deals with applications that have not been seen by the filer.

Available options are:

- Always** - Choosing this option, MiniDisc will always Filer\_Boot any unseen applications.
- Never** - A standard RISC OS application sprite will be displayed. Although this is clearly going to make MiniDisc display directory path menus the quickest.
  - ☆ This option may be useful if you are using network drives over a slow connection.
- With 'Alt'** - With this option set, MiniDisc will not attempt to Filer\_Boot an application unless 'Alt' is held down when you open a directory menu.

- **Quick (just sprites)**

By default, unseen applications will be 'Filer\_Boot'ed. With this option set, MiniDisc will instead look for an appropriate !Sprites file within the application and load it into the WIMP sprite pool. This can on occasion speed things up where an application may have a long !Boot file.

☆ The screenshot above shows my personal preferences for these options. With this setup, MiniDisc generates attractive directory menus with no noticeable slowdown.

### MiniDisc Choices directory configuration files

The MiniDisc Choices: directory holds all of the files that are used to configure a users MiniDisc settings.

#### Start

This is a RISC OS 'Obey' file that MiniDisc will run as the program starts up. Generally, this will be an empty file, however any additional commands that the user wishes to run can be added into this file.

☆ This file is run after the MiniDisc module has been installed, during the desktop application initialisation. This means that you can use any of the MiniDisc \* commands in this file safely.

#### Exit

This is a RISC OS 'Obey' file that MiniDisc will run as the program is shut down. Again, this will usually be an empty file where any additional commands that the user may wish to execute when MiniDisc is quit can be added.

☆ This file is run as the WIMP application is quit, but before the MiniDisc module is removed. This means that you can safely use any of the MiniDisc \* commands in this file.

#### Sprites (optional)

If a 'Sprites' file exists in your MiniDisc Choices directory, then MiniDisc will load them into memory when run.

See the section above describing the configuration option '**Use custom icons in main menu**' for full information.

#### Shares

If Acorn Access support has been enabled, then MiniDisc is able to store your default ShareFS shares (see the 'Network discs' section for more on how). These shares will be saved into this ('Shares') file, and re loaded from there when MiniDisc is run.

#### Choices

This is your main MiniDisc configuration file. All of the options in this file are changed through the main MiniDisc configuration window.

#### FilerApps

The 'FilerApps' file is a plain text file that can be used to add support for formatting and verifying your drives in MiniDisc drive control sub-menus.

Adding a 'Filer Application' is a slightly complicated task that involves adding information into this file to specify the program to run. The file itself contains details of the syntax to use when specifying Filer applications, along with a few examples.

#### Icons (optional)

This file is used to describe which sprites to use for which device when displaying buttons in the toolbar.

See the section on '**Customising toolbar buttons**' for further information.

#### IgnoreFS

A key feature of MiniDisc is it's ability to remove drive icons from the iconbar. These icons are placed there by filing system specific 'Filer' modules / applications. To remove these drive icons, MiniDisc searches for programs whose name ends in 'Filer' (e.g. 'ADFS Filer').

Unfortunately, there are a number of programs available whose names fall into this category that have nothing at all to do with drive icons. Obviously, you do not want MiniDisc to go removing these programs as well. If you find that you have a program which MiniDisc is incorrectly removing, then place it's name into this file (a plain text file).

By default, this file contains entries for two known programs, these are:

**QuickFiler**

**PhotoFiler**

#### Shortcuts

This file contains your Shortcuts menu definitions. Use the Shortcuts Builder utility to change your Shortcuts configuration.

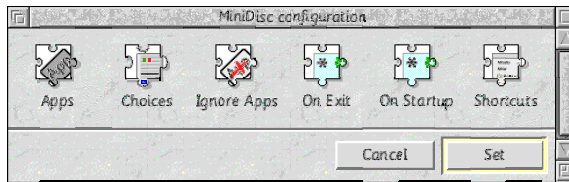
#### SmartSave

This file records information about file type to directory mappings, as used by the 'Smart' saver utility.



## RISC OS Select configuration plug-in

MiniDisc is distributed with a Configure 'plug-in', compatible with RISC OS Select version 4.29 or newer. Installing this plug-in will add a 'MiniDisc' section into Configure. This allows you to configure a number of the files described in this section, as well as the ability to launch the main MiniDisc configuration program and the Shortcuts Builder utility.



## Finding out more / technical information

Further technical information, including configuration file formats, and some of the more obscure ways in which MiniDisc may be customised should be available on-line via the main MiniDisc website at:

<http://minidisc.iconbar.com>

**Behind the scenes...**

This section covers the MiniDisc \* commands. This is an advanced subject that the average user can comfortably skip over. For users that may like to utilise some of MiniDisc's features in their own programs, this section describes the purpose and syntax of each \* command.

Desktop\_MiniDisc

Command	Desktop_MiniDisc
Description	This command is used to start the WIMP application part of MiniDisc.
Syntax	Use <b>*Desktop</b> to start MiniDisc.
Notes	For internal use only.

MD\_FilerQuit

Command	MD_FilerQuit
Description	Send a fake 'Filer is about to quit' message to a particular module.
Syntax	<b>MD_FilerQuit</b> <module name>
Notes	Sending this message to a filer module (e.g. ADFSfiler) will cause it to think that the RISC OS filing system is shutting down. The specified module will respond to this command by quitting it's desktop front-end. This will result in the named module removing any filer icons it may have on the iconbar.

MD\_FilerStart

Command	MD_FilerStart
Description	Send a fake 'Filer is about to start' message to a particular module.
Syntax	<b>MD_FilerStart</b> <module name>
Notes	Sending this message to a filer module (e.g. ADFSfiler) will cause it to think that the RISC OS filing system is about to start up. The specified module will respond by reinitialising itself, in-effect restoring it's drive icons on to the iconbar.

MD\_TaskQuit

Command	MD_TaskQuit
Description	Send a 'Wimp Closedown' message to a particular task.
Syntax	<b>MD_TaskQuit</b> <task name>
Notes	This command will send a message to a specific WIMP application, telling it to quit.

MD\_ShowMenu

Command	MD_ShowMenu
Description	Display a MiniDisc Shortcuts menu.
Syntax	<b>MD_ShowMenu</b> <menu name>
Notes	

## MD\_ShowPathMenu

Command	MD_ShowPathMenu
Description	Display a MiniDisc directory menu.
Syntax	<b>MD_ShowPathMenu</b> <path>
Notes	

## PinBack

Command	PinBack
Description	Moves the Pinboard behind all other windows.
Syntax	<b>PinBack</b>
Notes	RISC OS 4 only.

## PinFront

Command	PinFront
Description	Moves the Pinboard in front of other windows.
Syntax	<b>PinFront</b>
Notes	RISC OS 4 only.

## PinToggle

Command	PinToggle
Description	Toggles the Pinboard position between the front or back of the windows stack.
Syntax	<b>PinToggle</b>
Notes	RISC OS 4 only.

# Reporting problems

## What to do if you encounter problems using MiniDisc

Generally, MiniDisc is becoming quite stable these days. However, there is always likely to be something that I've missed, so...

If you do encounter problems, I would be grateful if you could send me as much detail as possible to:

`bugreport@minidisc.iconbar.com`

If MiniDisc crashes completely, then please follow the instructions below:

**IMPORTANT NOTE:** *Running MiniDisc in debugging mode slows everything down drastically. Be patient when clicking on menus etc. as this will all take a LOT longer to perform as MiniDisc records details of what is going on in the 'DebugLog' file. Suffice to say that I strongly suggest that you do not switch this option on unless it is entirely necessary to help me track down a bug.*

1 / Edit the file `!MiniDisc.bin.SetDBState` and alter the line:

```
Set MiniDisc$DebugState "Off"
to...
Set MiniDisc$DebugState "On"
```

2 / Re-run MiniDisc, and re-create the situation where the crash occurred.

This will set MiniDisc to record debugging information into the file 'DebugLog' within the !MiniDisc application directory.

3 / Run the Obey file `!MiniDisc.bin.GenLog`. This will create a file called `ErrReport` within the !MiniDisc application directory.

Note: This script generates a host of debugging information including the applications currently running in your machine. For this information to be useful, it is best run straight-away after your problem occurs. If your machine crashes after the error occurs, then you should generate the 'DebugLog' as described above, reboot your machine, then re-create the situation **JUST BEFORE** where the problem occurred (i.e. load whatever other applications were running at the time) and then run 'GenLog'.

4 / Email the `ErrReport` file, along with as much information about your problem as possible to:

`bugreport@minidisc.iconbar.com`

