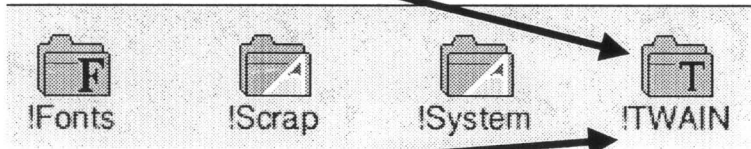


TWAIN in Ten Easy Steps

1 Drag the !TWAIN directory from the floppy disc to your hard disc. A good place to put it is with other resource directories.



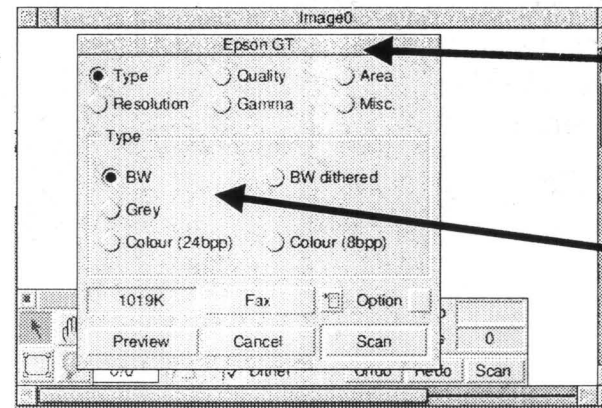
2 Double click on the !TWAIN on your hard disc. Note this simply makes it the current copy of !TWAIN nothing else is supposed to happen.

3 Double click on ImageMaster on disc.

4 ImageMaster will appear on the icon bar.

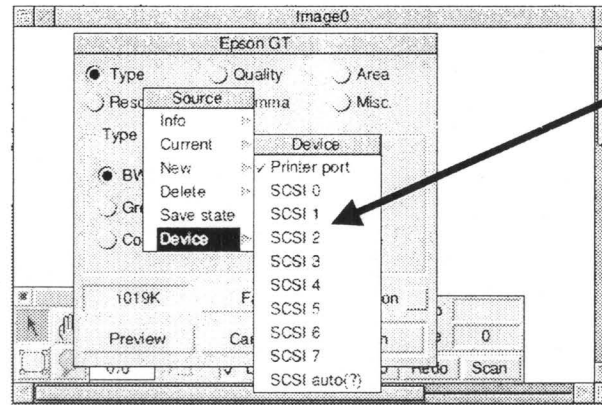
5 Click on the ImageMaster icon bar icon. The main ImageMaster window will appear.

6 Click on the Scan button on the ImageMaster info palette.

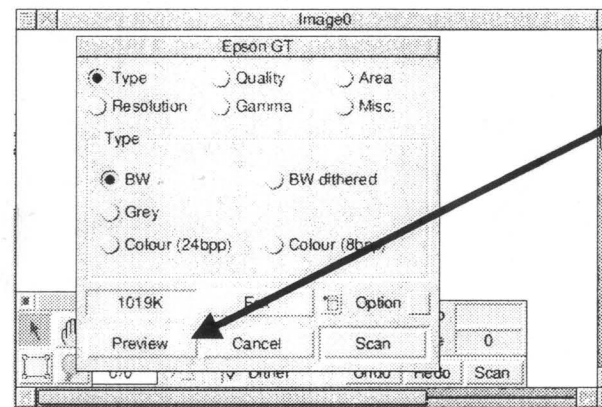


7 The scanner driver window will appear.

8 Click the Menu button at this point over the scanner driver window.



9 The Source menu will appear. Follow the entry 'Device' and click on the appropriate entry for your scanner.



10 Click on the scanner driver 'Preview' button and your scanner will start to scan.