

# Fontastic



Version 0.10 (09-Sep-2007)

## **Fontastic is public domain**

This program may be freely distributed for no more than the cost of the media on which it is distributed.

It remains at all times © 2007 R. F. Windley & The Really Small Software Company.

### **Disclaimer:**

This software is supplied as is. No responsibility will be taken by the author for any loss of data through the use or misuse of this application.

# Contents

Introduction . . . . .	1
Getting started . . . . .	2
Loading Fontastic. . . . .	2
Managing font groups . . . . .	5
Adding a new group. . . . .	6
Adding fonts to a group . . . . .	7
Activating a group . . . . .	8
The difference between 'on' and 'activated' . . . . .	8
Deleting a group. . . . .	9
Generating an index. . . . .	10
Scanning documents . . . . .	13
The iconbar menu . . . . .	14
Choices . . . . .	15

---

## Introduction

*Fontastic* is a simple font management application. It allows fonts to be split into different groups which can be activated as required.

An index of currently active fonts can be generated in either Draw or DDL format which can then be printed out to provide a reference to the fonts available on a system and the group that they belong to.

*Fontastic* also has the ability to scan any document when it loads and turn on the relevant font groups automatically.

## Requirements

*Fontastic* should run on any RISC OS 3+ machine with 2Mb of memory. It does require the Toolbox modules so this might push requirements up somewhat.

Please note however that the application has only been tested on RISC OS 4.39 and RISC OS 6.

---

## Getting started

### Loading Fontastic

*Fontastic* can be loaded by double clicking on the *Fontastic* icon in the filer display:



Once loaded an the *Fontastic* icon will appear on the left side of the iconbar in the standard way.

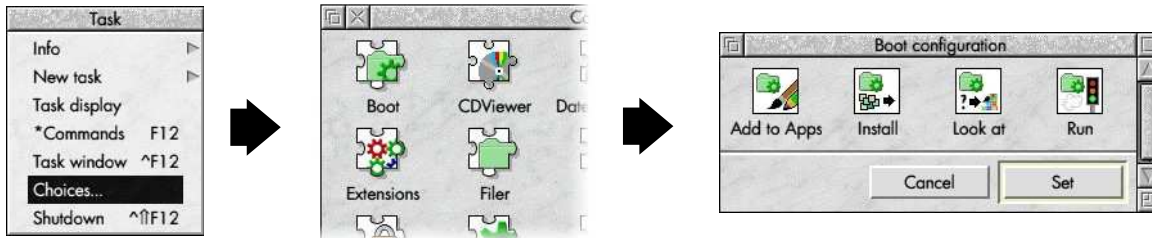
It is however recommended that *Fontastic* is automatically loaded when you switch you computer on. This will enable any font groups that you have switched on to be activated.

Not loading *Fontastic* in this way may also impact the reliability of the document scanning feature.

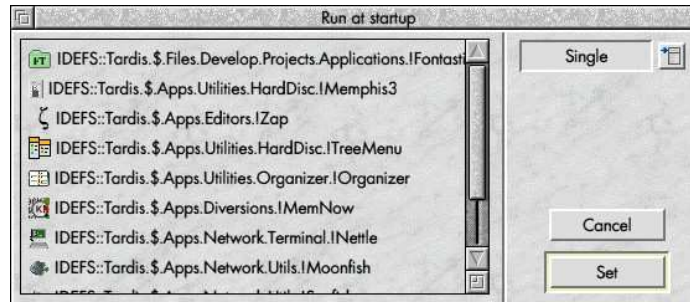
## Loading Fontastic automatically

### RISC OS 4 and RISC OS 6

For these versions of the operating system choose *Choices...* from the *Task* iconbar menu which will display the *Configuration* application. From there, click the *Boot* icon to display the *Boot configuration* window:



From the Boot configuration window click *Run* to display the *Run at startup* window:



---

Now simply drag the *!Fontastic* icon from the filer window where it has been installed to this window and it will be added to the list. Click *Set* to save the change.

Next time you start your computer *Fontastic* will be automatically loaded.

**Other versions of RISC OS**

Please refer to the manual that came with your computer.

---

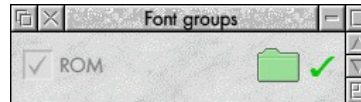
## Managing font groups

Clicking the *Fontastic* icon on the iconbar will display the *Font groups* window.



Each font group has an option button that indicates whether it is active or not, the name of the group, a group directory and optionally a green tick indicates that the group is on. The distinction between a group being activated and on is covered later.

The first time this is displayed a single group will be shown:



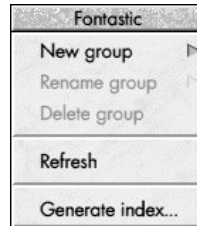
This is the ROM group and is always present and always activated which is why the option button is faded.



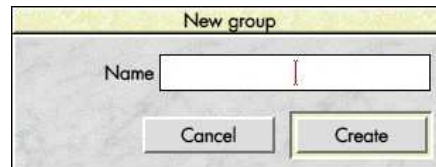
---

## Adding a new group

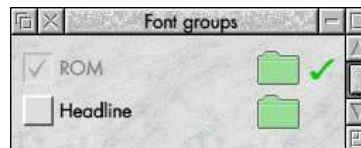
In order to add a new group click Menu over the *Font groups* window. The following menu is displayed:



Choose *New Group* from this menu to enter a new group name and click *Create*:



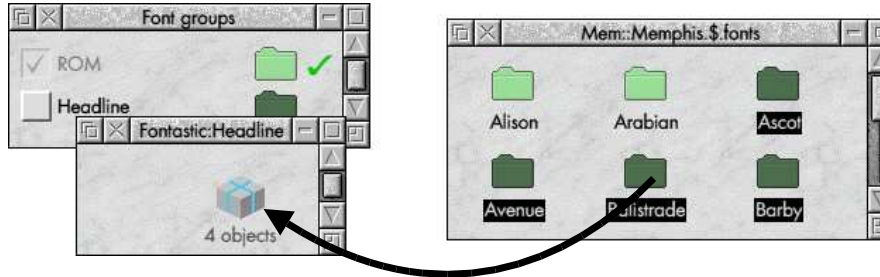
The new group will appear in the *Font groups* window:



---

## Adding fonts to a group

Once a font group has been created it is easy to add fonts to it. Double clicking the directory icon next to the group name will display a filer window. Fonts can then just be dragged from their source location to the font group:



The fonts will then appear in the font group.

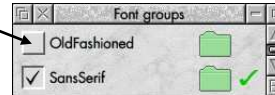
Note that the underlying files will be copied.

---

## Activating a group

A group is activated by selecting the option button next to the group name. Once the group has been activated the green 'on' tick will appear.

Click here to activate group



Unselecting the option button will remove the tick and deactivate the group.

## The difference between 'on' and 'activated'

At this point it is worth mentioning the difference between a group being activated and being on.

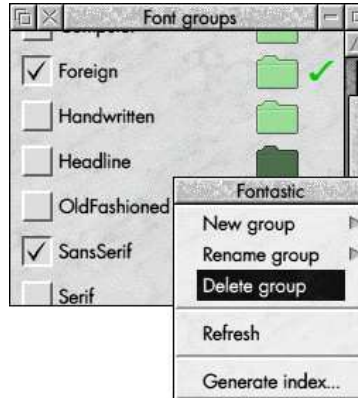
A group that has been activated is also always on. A group that is deactivated that was activated will no longer be on.

It is however possible for a group to be on without having being activated. This can occur when the document scan functionality is used. If a group is found to contain a required font then that group will be turned on but will not be permanently activated. That is to say, the next time the computer is switched on, that group will not be activated.

---

## Deleting a group

A group can be deleting by selecting the directory next to the group name and choosing *Delete* from the menu.

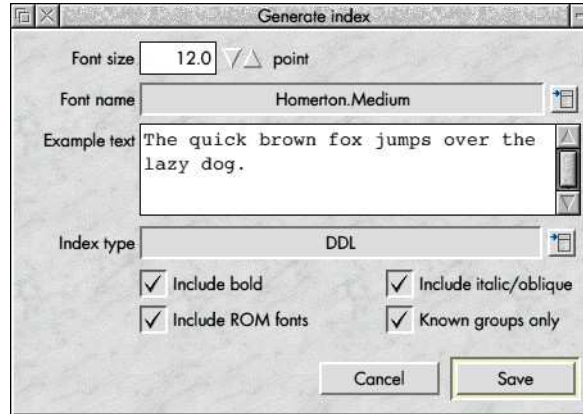


Note that doing this will also delete all the fonts that belong to the group.

---

## Generating an index

Choosing *Generate index...* from the main menu will display the *Generate index* window:



This allows an index of currently available fonts to be generated as either a series of Draw files or a single DDL document that can be loaded into Ovation Pro.



---

## Index options

When creating an index the following settings can be adjusted:

### Font size

The size in points of the text in the index document.

### Font name

The name of the font used to display the font name, point size and group name.

### Example text

A piece of text to display using the font being indexed. Not that when generating a Draw index the text should all fit on one line.

### Index type

Either Draw or DDL as described above.

### Include bold

If switched on, any bold variants of a font will be included in the generated index.

### Include italic/oblique

If switched on, any italic or oblique variants of a font will be included in the generated index.

### Include ROM fonts

If switched on the standard ROM fonts will be included in the generated index.

### Known groups only

If switched on, only fonts that belong to *Fontastic* font groups will be included in the index.

Click the *Save* button to display a standard save box which will allow the generated index to be saved.

---

## Scanning documents

*Fontastic* has the ability to scan documents automatically for any fonts and switch on the group that contains the font. This can be achieved in two ways.

### Defining filetypes to scan

Using the *Choices* window (see below) a list of file types can be defined that will be automatically scanned every time they are loaded.

For example, Draw or Ovation Pro files might be configured to always be scanned when they are loaded.

### Dragging a file to the Fontastic icon

Dragging a file to the *Fontastic* icon on the iconbar will cause the file to be scanned regardless of type. Once the file has been scanned and any required font groups activated the file will be loaded into the target application.

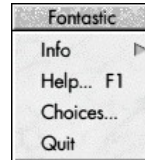
Please note that the scanning process is not completely accurate and can falsely identify fonts as being required by a document when they are not actually used.



---

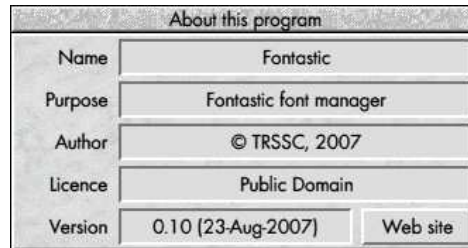
## The iconbar menu

Clicking Menu over the *Fontastic* icon on the iconbar will display this menu. The following items are available:



## Info

Moving the mouse pointer over this item displays the *About this program* window which displays version information about *Fontastic*.



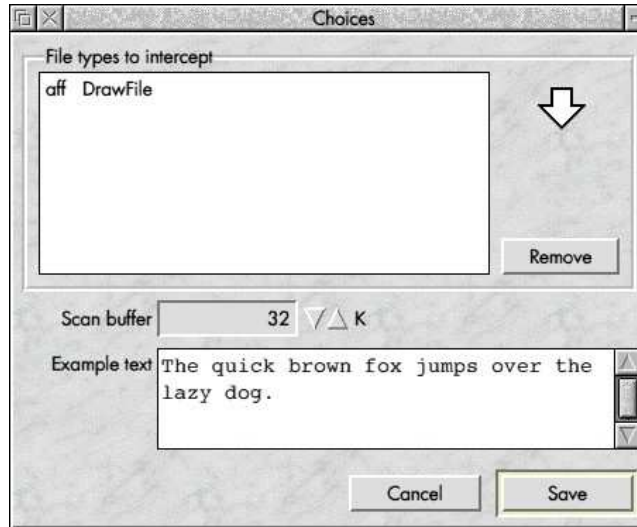
## Help

This will display the help supplied with the application.

---

## Choices...

Choosing this will display the choices for *Fontastic*:



The following choices can be set:

### **File types to intercept**

A list of file types that will be scanned by *Fontastic* for fonts whenever they are double clicked on. Any fonts that are found will have their group switched on so the document can be displayed.

---

File types can be added by dragging a file of the required type to the window. A file type can be removed by highlighting it in the list and clicking *Remove*.

**Scan buffer**

The size of buffer to use when scanning a document for fonts.

**Example text**

The default text to be used when generating a font index.

**Quit**

Choosing this item will cause *Fontastic* to exit.