

# Docktor



**Version 0.13 (22-Oct-2012)**

## **Docktor is public domain**

This program may be freely distributed for no more than the cost of the media on which it is distributed.

It remains at all times © 2008 - 2012 R. F. Windley & The Really Small Software Company.

### **Disclaimer:**

This software is supplied as is. No responsibility will be taken by the author for any loss of data through the use or misuse of this application.

# Contents

Introduction . . . . .	1
Requirements. . . . .	1
Getting started . . . . .	2
Loading Docktor. . . . .	2
Adding a new application . . . . .	4
Removing an application . . . . .	5
Moving applications between panels . . . . .	6
Loading Docktor automatically. . . . .	7
Configuration . . . . .	9
Categories . . . . .	12
Panel menu box. . . . .	14
The iconbar menu . . . . .	16

---

## Introduction

*Docktor* is a simple application dock. It allows applications to be split into categories and then easily launched from a series of dock panels that slide onto the desktop as required.

## Requirements

*Docktor* should run on any RISC OS 4+ machine. It may run on other versions of RISC OS but has not been tested on anything less than RISC OS 4. *Docktor* requires the Toolbox modules to be installed. Links to the appropriate Toolbox modules for your computer can be found on *Docktor* download page.

---

# Getting started

## Loading Docktor

*Docktor* can be loaded by double clicking on the *Docktor* icon in the file display:



Once loaded an the *Docktor* icon will appear on the right side of the iconbar in the standard way. A default set of panels will also appear down the left side of the screen:



---

Moving the mouse pointer over a panel will extend it:

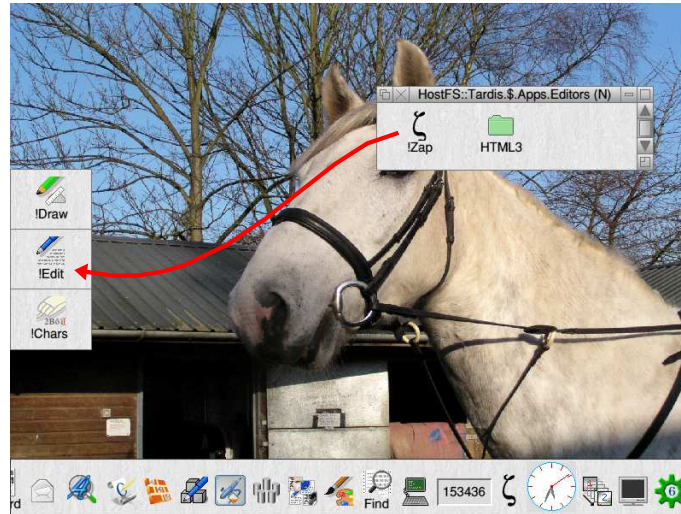


Double clicking on an application icon will then load the application.

---

## Adding a new application

It is very easy to add new applications to a panel. Simply drag the application icon from the filer window to the target panel to add it. The application icon will appear on the panel:

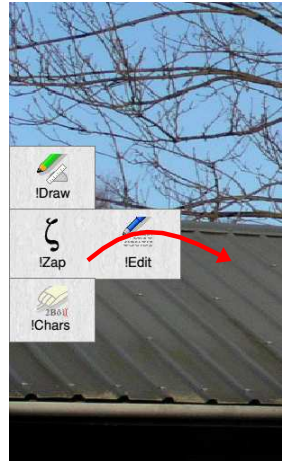


Note that any application, directory or file can be added to a panel. Double clicking the object will always perform the same operation as double clicking in a filer display window.

---

## Removing an application

To remove an application drag the application icon off the panel.



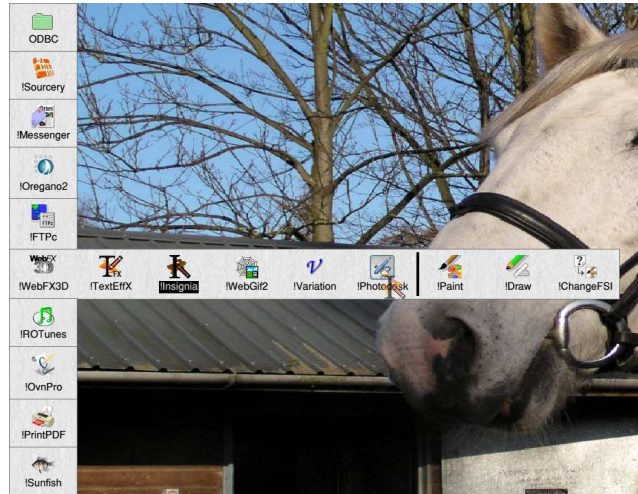
The application will be removed from the panel.



---

## Moving applications between panels

To move an application from one panel to another, or to a different place on the same panel, drag the application icon to the new location.:



Whilst dragging the icon to the new location a black bar is displayed to indicate where the icon will be positioned.

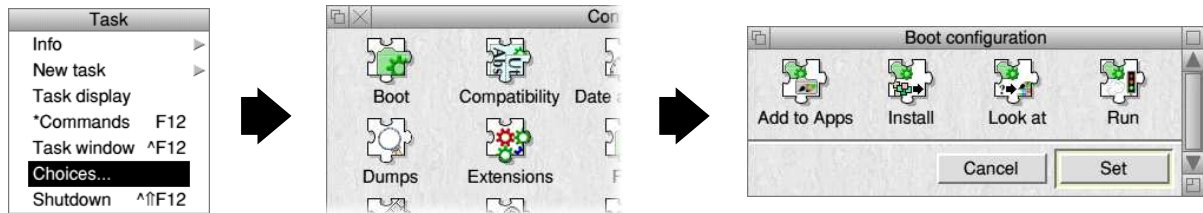
---

## Loading Docktor automatically

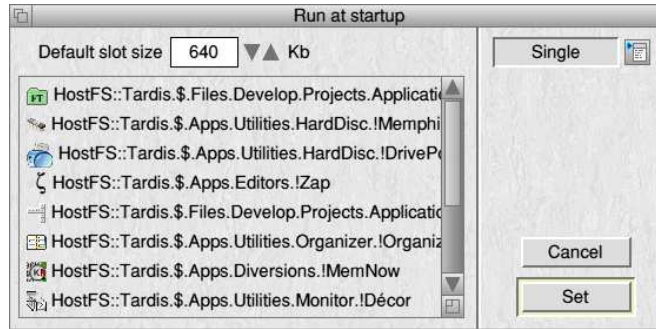
It is recommended that *Docktor* is automatically loaded when you switch your computer on.

### RISC OS 4 and RISC OS 6

For these versions of the operating system choose *Choices...* from the *Task* iconbar menu which will display the *Configuration* application. From there, click the *Boot* icon to display the *Boot configuration* window:



From the Boot configuration window click *Run* to display the *Run at startup* window:



Now drag the *!Docktor* icon from the filer window where it has been installed to this window and it will be added to the list. Click *Set* to save the change.

Next time you start your computer *Docktor* will be automatically loaded.

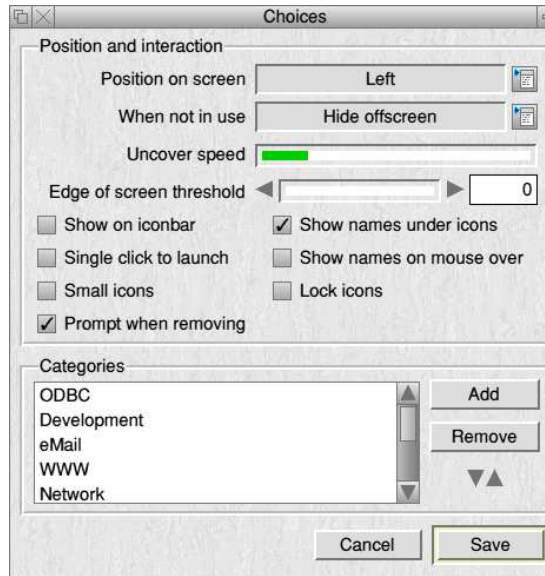
### **Other versions of RISC OS**

Please refer to the manual that came with your computer.

---

## Configuration

All of the functionality of *Docktor* is controlled through the *Choices* window. To display the *Choices* window choose *Choices...* from the iconbar menu:

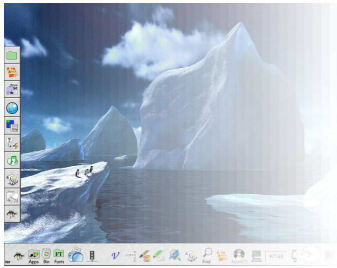


The following settings are available:

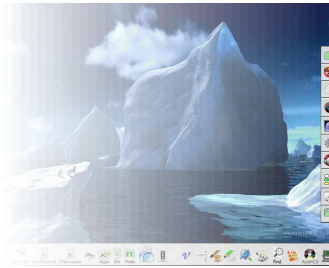
---

## Position on screen

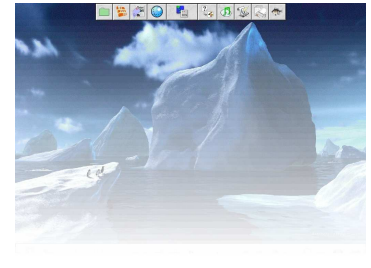
This controls where on the screen the *Docktor* panels will be displayed. There are three settings:



*Left*



*Right*



*Top*

## When not in use

This is used to control what should happen to the panels when they are not in use. There are three options:

### *Keep on top*

The panels remain on top of all other windows with the first icon of each panel displayed at the edge of the screen.

### *Hide in background*

The panels are brought to the front of all other windows when the mouse pointer moves over them and sent to the back when the mouse pointer moves away. The first icon of each panel displayed at the edge of the screen.

### *Hide offscreen*

The panels are hidden off the side of the screen and appear when the mouse pointer moves near the screen edge.

---

### Uncover speed

This is the speed at which the panels will slide onto the screen. Slower computers may benefit from a higher setting to get the panel onto the screen as quickly as possible.

### Edge of screen threshold

This controls how near a dragged icon has to get to the Docktor panels before they appear.

### Show on iconbar

When this is selected the *Docktor* icon will appear on the iconbar. Changing this setting only becomes effective the next time *Docktor* is loaded.

### Show names under icons

Selecting this displays the name of the application, file or directory under the icon on the panel:



### Single click to launch

If this is selected then only a single click is required to launch an application from a panel rather than a double click.

---

### Show names on mouse over

Selecting this will cause the name of the application, file or directory to appear when the mouse pointer moves over it:



### Small icons

Selecting this will use small versions of the application icons.

### Lock icons

When this is selected icons cannot be repositioned within panels.

### Prompt when removing

Select this to display a prompt when removing an icon from a panel.

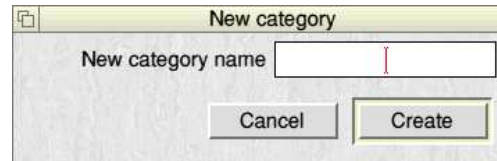
---

## Categories

Categories allow applications to be grouped together. Each category results in one panel being displayed. The category names are not actually displayed anywhere.

### Adding a category

Clicking the *Add* button will display the *New category* window:



Entering a name and clicking *Create* will add the category to the list.

### Removing a category

Highlight the category to be removed and click the *Remove* button.

### Change the order of categories

The order in which categories are displayed can be changed by highlighting a category and using the up and down buttons to change where it appears in the list.

### Saving settings

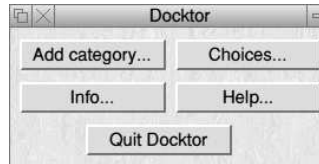
Click the *Save* button will save and apply any setting changes excluding the *Show on iconbar* setting as described above.



---

## Panel menu box

Clicking Menu over a panel displays the Panel menu box:



This allows access to the options that appear on the iconbar menu which would not be accessible if the iconbar icon is not displayed:

### **Add category...**

Displays the *New category* window that allows a new category to be added without needing to display the *Choices* window.

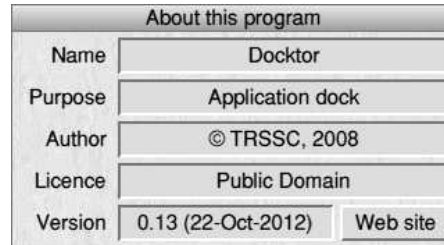
### **Choices...**

Choosing this will display the choices for *Docktor*.

---

## Info

Moving the mouse pointer over this item displays the About this program window which displays version information about Docktor.



## Help

This will display the help supplied with the application.

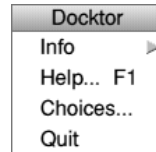
## Quit Docktor

Choosing this item will cause *Docktor* to exit.

---

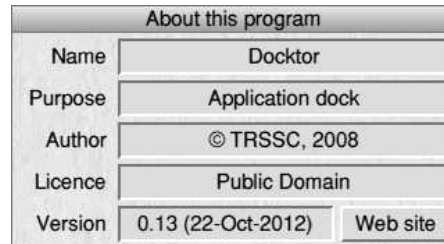
## The iconbar menu

Clicking Menu over the *Docktor* icon on the iconbar will display this menu. The following items are available:



### Info

Moving the mouse pointer over this item displays the About this program window which displays version information about Docktor.



### Help

This will display the help supplied with the application.

---

**Choices...**

Choosing this will display the choices for *Docktor*.

**Quit**

Choosing this item will cause *Docktor* to exit.